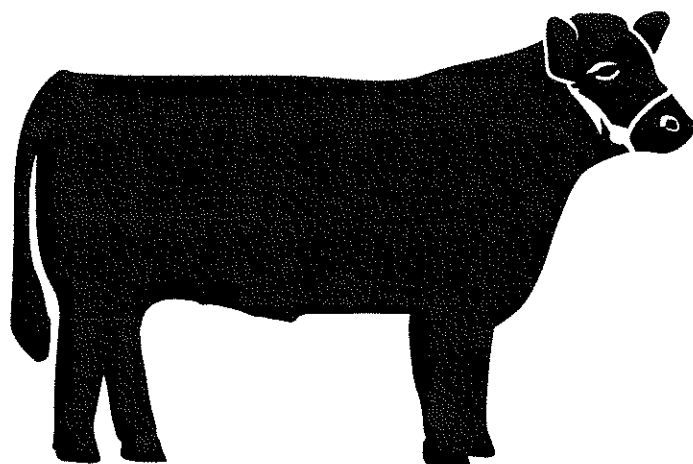


Elkhart County 4-H Beef Club

Information Packet 2020-2021



Important Phone Numbers and Websites:

Mark Slabaugh: 260-350-4506

mark.slabaugh@weaveragandlawn.com

Steve George: 574-304-9734

hmsraiders@msn.com

Renee' Klein: 574-276-4794

Reneeklein12@yahoo.com

Facebook Page:

Elkhart County 4-H Beef Club

Beef Club Website:

Elkhartcounty4hbeefclub.com

4-H Online:

in.4honline.com

Elkhart County 4-H Fair:

4hfair.org

Fair Entry:

Fairentry.com

Beef Club Weigh-in Information:

We offer two dates to weigh-in and register your cattle for the fair. The two dates for the 2021 Fair are: December 12, 2020 and February 20, 2021. Both weigh-ins will be held at the Shipshewana Auction Barn on State Road 5 in Shipshewana from 9:00am-12:00pm.

All Purebred steers, crossbred steers, market heifers, crossbred heifers being shown at the fair in 2021 will need to come to one of our two offered weigh-in dates. You only need to attend one weigh-in with your animals. If you do not come to the December weigh-in you MUST come to the February weigh-in to get your animals registered for the 2021 Fair.

NEW THIS YEAR: Purebred Heifers DO NOT need to come to the weigh-in. You must bring your original registration paper to the auction barn for all your purebred steers. We are requiring papers for all purebred animals this year. We will make a copy of these at weigh-in. Please note this also means purebred steers will need to be tattooed. Please make sure this is done to your animals.

If you are bringing a registered purebred heifer to the fair, please bring us a copy if you have it to weigh-in of your registration papers and RFID information. We will need to keep a copy of your papers; we will need to keep it for our records. We will be checking purebred heifers' tattoos and RFID tags at the fair.

We offer a pour on topical de-wormer at each weigh-in for \$5.00 a head. If you would like us to worm your calves as they go through the chute please let us know.

If you are planning on showing your animals at the state fair, we will need to get a hair DNA sample from you. You will be asked to pull hair from your calf, and we have a special envelope to put it in and will submit that for you.

RFID tags: Please note your breeders (where you are purchasing your animals from) need to be placing RFID tags in the animals for you before you purchase/bring them home. If you do not get this done (which is strongly encouraged) you will be charged \$5.00 per RFID tag we place in your animals at weigh-in. All animals must have an RFID tag in their ear.

All Market animals and Commercial heifers will be given a 5-digit county tag placed in their ear at weigh-in.

State Fair & Elkhart County Market Animal Breed Classification

| <u>Breed</u> | <u>Minimum Percentage</u> | |
|-----------------|----------------------------|--|
| Angus | 100% | Must be polled (No scurs) |
| Belted Galloway | 50% | Must be polled (No Scurs) |
| | | Must be sired by a registered Belted Galloway Bull |
| | | Must exhibit Belted Galloway breed characteristics |
| Charolais | 50% | |
| | | Black, Black-baldie, dark grey & red are not permissible |
| | | Smokie colored steers are acceptable |
| Chianina | Registerable | |
| Chi-Angus | Registerable | |
| Gelbvieh | 50% | |
| | | Must be sired by a registered Gelbvieh bull |
| Hereford | 100% | |
| Limousin | Registerable | |
| Maine | 25% | |
| Market Heifer | No breeds (Show by weight) | |
| Mini Hereford | 100% | |
| | | Steers – 48" or less at hip |

State Fair & Elkhart County Heifer Breed Classification

| <u>Breed</u> | <u>Minimum Percentage</u> | |
|---------------------|---------------------------|--|
| Angus | 100% | Must be polled (No scurs) |
| Belted Galloway | 100% | Must be polled (No scurs) |
| Charolais | 100% | |
| Charolais Composite | 50% | Cannot be black |
| | | No more than 15/16 Charolais % |
| Chianina | | Registerable |
| Chi-Angus | | Registerable |
| Gelbvieh | 75% (Gelbvieh) | |
| | | Registered balancer – 25% – 75% Gelbvieh |
| | | Blood |
| Hereford | 100% | |
| Limousin | 75% | |
| Maine | 75% | |
| Mainetainer | Registerable 25% | |
| Mini Hereford | 100% | Must be 45" or less at hip |

Rate of Gain Information:

We would like to explain a little bit about rate of gain and what to expect out of your cattle to get them ready for fair. We need to remember we are a fun project, but we are also trying to raise market ready animals meaning ones that are ready to be processed as a part of the project. This is why we have a minimum weight to be able to sell an animal at the fair. Animals that are not above the minimum weight (which is also a very generous weight) are not market ready and are not finished enough to be processed. Our minimum weight to sell at the fair is 900 pounds.

Example: Your market animals except Mini Herefords should weigh approximately 700 pounds by the first weigh-in. This means if they would gain approximately 2.5 pounds a day between the first weigh-in and show day at the fair (226 days to gain) they would weigh approximately 1265 pounds which is a good target weight to have them at for the fair to have them finished. To get an animal to gain at this rate they could eat at least 15 pounds of grain a day. If you come to the second weigh-in your animals should weigh about 900 pounds to get them to gain enough to get to the target weight.

You need to adjust how you feed based on how the animal is tracking along. They will need to be fed more or less based on how they are gaining.

If you do not have access to scales let us know and we can help out with that.

Geraniums sales & selection of stalls

The Elkhart County 4-H Beef Club has always been one of the top selling clubs for geraniums in the county. It has been one of the major fund raisers for our club. Funds from these projects have been used for improvements to the beef barn and additional funds for our summer open show. This money also benefits the 4-H corporation. The funds are used for ribbons at the fair, 4-H manuals, and sponsors 4-H trips and county workshops. So, as you can see, the geranium sales are a big part of our beef club finances. We have also used the geranium sales totals to pick the stalls in the beef barn during the fair. There has been some confusion about the procedure for this process. We hope we have made things clearer with the following guidelines:

1. Every 4-H beef club member, not family, must sell at least one flat of flowers to be eligible to be in the stall selection process. If you elect not to sell flowers, then the member or family, will go further down in the stalling process.
2. The advisory board voted to allow 4-H members who parents are leaders, assistant leaders, and project leaders to be stalled before the top sales person at the discretion of the stalling committee. This will allow the adults to fulfill their requirements at the beef office.
3. The top selling person or family will have first pick of the available stalls. This person or family may add additional beef club members to their group. This group may have up to 12 animals (the one exception would be a single family with more than 12 calves) and there is no limit on the number of families. Each individual 4-H member of this group must have sold at least one flat of flowers. This group will stay in the number one position and not have to move down as in previous years.
4. The rest of the stall selection process will follow the number of flowers sold per individual and/or group. If you elect not to sell flowers, then your selection will be determined by a blind draw at the end of the process.
5. If there are ties in the number of flowers sold, a blind draw will be used to determine the order of those individuals or groups.
6. When your position in order comes up, you must choose your stalls at that time. You cannot pass and wait until later time. If you pass you will move to the bottom of the list.
7. When it is your turn to select, you can select stalls at either end of the sections. (East or West ends – not in the middle of sections.)
8. No cash donations to replace an order of flowers. In the past we have allowed a cash donation in lieu of an order of flowers. We suggest you order flats and donate them to the beef barn decorating committee and also help with planting of them.

Beef Club Incentive Program

New for the 2021 Beef Club year we are going to try a new incentive program for all of our members!

We would like to make coming to our meetings more fun. It is important for all our members and parents to come to our meetings so we as leaders can relay important information to you all. We realize you are all very busy and it is hard to come to all of the meetings, but it is also the best way for us to present information to you. With that being said we would like to explain our new incentive.

We will be offering prizes at the end of the year for your participation in Beef Club related events. Every time you come to a beef club function or participate in a Beef Club capacity i.e. Work nights, beef meetings, weigh-ins, our preview show, pancake breakfast etc. you may get a slip of paper and place your name in the coffee can that will be at each meeting. If you are at the beef meetings, I will have the can at the meetings and you can come up and place your name in one time. This is for 4Hers only.

This will be your responsibility to put your name in the can at the meeting. I will not be keeping track of attendance on this. You must remember to put your name in at the meeting or function you are attending.

At the July Meeting we will be drawing for prizes. These could be any of the following examples:

TV

Show Supplies

Gift Cards

Travel Mugs

Blankets

Free Stall Rent

Restaurant Gift Cards

Etc.

NORTHERN CLASSIC PREVIEW

Elkhart County Fairgrounds, Goshen IN

17746 County Road 34 Goshen, IN 46528

2 Ring Show Saturday March 27, 2021

Cattle may arrive after 4:00 pm March 26



Start time: Ring A starts at 10:00 am, Ring B 10:15 am

Weigh in: March 27th 7:00 am – 8:30 am

Show Order: Showmanship > Heifers > Market Animals
(Pee Wee Showmanship Free)

Judges: Mark and Deb Core

Entry:

\$40 /Ring

Showmanship \$5/Ring

Awards for Both Rings

- \$500 Champion Heifer/Market
- \$250 Reserve Champ Heifer/Market
- \$100 3rd Overall Heifer/Market
- \$75 4th Overall Heifer/Market
- \$50 5th Overall Heifer/Market
- Breed Champions
- Reserve Breed Champions
- Top 5 Showman in each division

Rules:

- IJBCA Indiana's Finest Rules
- Cattle can be stalled in designated barns or trailers
- Out of state cattle must have health papers
- Heifers shown by breed and age; commercial by weight
- Market Animals shown by breed then broken by weight
- Committee reserves the right to evaluate any animal for breed qualification
- Not responsible for accidents
- No alcohol on fairgrounds

Sullivan Supply Show Trailer

Concessions Available

Contacts: Steve George 574-304-9734 – Jason Nine 574-209-1000