

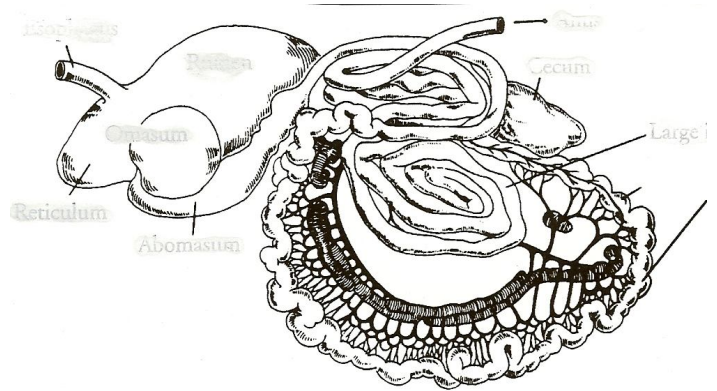


# 4-H Sheep Project

LaGrange County  
Record Sheet 1-3  
Grade 7

Name: \_\_\_\_\_ 4-H Club \_\_\_\_\_

1.



Identify each part of the gastric system:

2. Lambs at fair time should weigh \_\_\_\_\_ or \_\_\_\_\_.

3. Describe how to properly put a halter on the sheep:

4. Tell which month each of the following would normally occur in:

- \_\_\_\_\_ Pasture ewes.
- \_\_\_\_\_ Pregnancy check the ewes.
- \_\_\_\_\_ Separate ewe and ram lambs.
- \_\_\_\_\_ Sell rams not kept for breeding.
- \_\_\_\_\_ Cull ewes that did not breed.

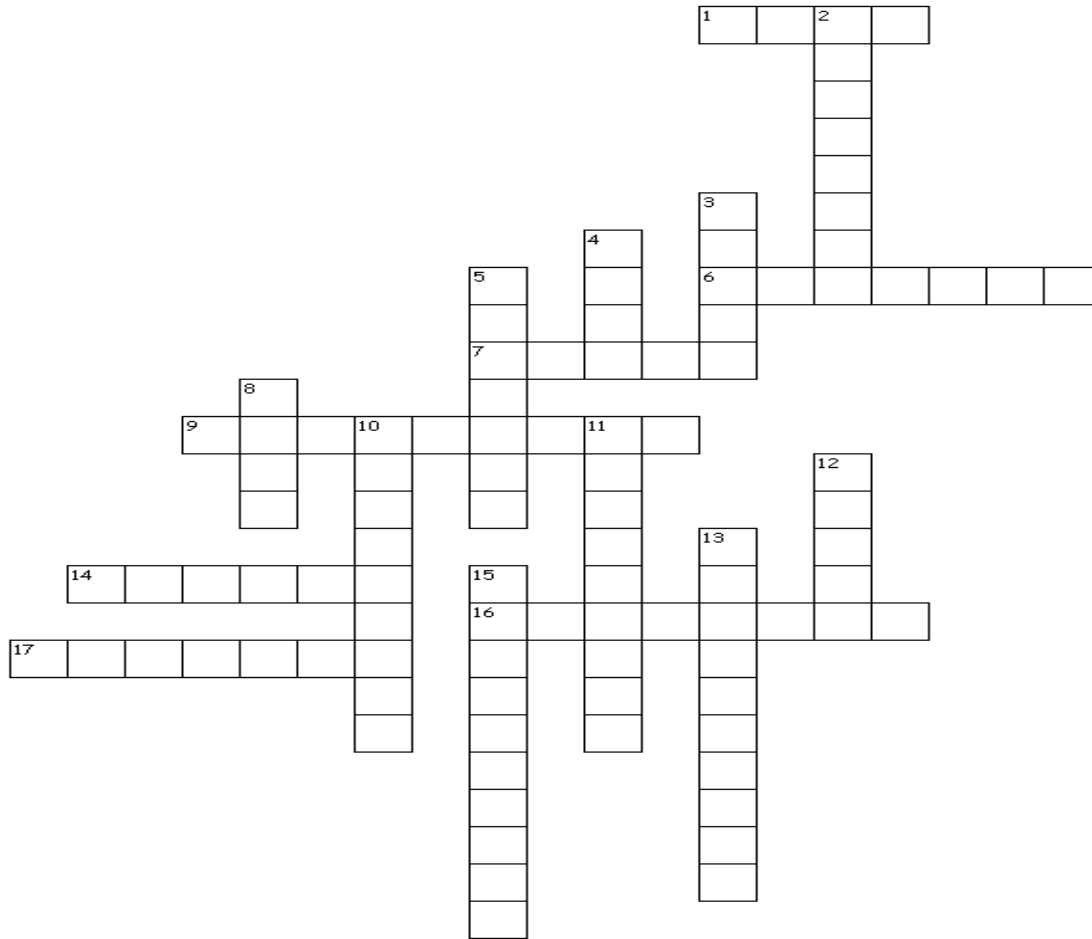
5. It is a good idea to keep lambs on a creep ration for \_\_\_\_\_ to \_\_\_\_\_ days after weaning.

6. What three USDA quality grades do 98% of all lambs carcasses fall into?

7. What are the two major classes of wool?

8. What are the three traits you want to look for in a genetic selection program for your flock?

## 9. Selection terms



### Across

1. region where the tail was removed
6. attractive, possessing a pleasing conformation
7. a very long body
9. the amount of bone
14. big, strong
16. longer and taller
17. a smooth and harmonious blending of body parts

### Down

2. internal body dimensions
3. too much fat
4. the part between the last rib and the hip bones
5. the dressed body of a slaughtered meat animal
8. the area between the hip bones and the tail head
10. free of structural defects
11. the degree of fatness in breeding animals
12. size
13. the area of the lamb from the last rib back
15. possession of well-developed secondary female characteristics

Answers to all the questions can be found in the Sheep Resource Handbook 4-H 194R