



4-H Sheep Project

LaGrange County
Record Sheet 1-3
Grade 3

Name: _____ 4-H Club _____



1.



2.



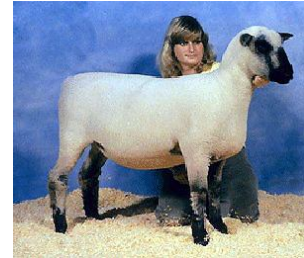
3.



4.



5.



6.

_____ Southdown

_____ Targhee

_____ Lincoln

_____ Polypay

_____ Shropshire

_____ Rambouillet

7. A castrated male sheep is called a _____.

8. The removing of the edges from the whole fleece is called _____.

9. Match the following:

Ram Breed

A. Superior mothering ability

Ewe Breed

B. Either ram or ewe

Dual Purpose Breed

C. Meat-type

Answers to all the questions can be found in the Sheep Resource Handbook 4-H 194R

10. Sheep Equipment

S Y X V J P P Y R M D S X S H
 E Z X C Y R Q S W E S E L C E
 L S T H E R M O M E T E R S A
 A R B O S M S U A Y W L R D T
 C E Y R O R A R F O M E A T L
 S M V C C G T S T K P D W H A
 R M C L B A U X C P A R F D M
 X I J M G Q U U I U D Z X D P
 H R H S B V E L A X L N I B S
 N T M I X D C H F L L A Z M W
 M F D P D L H C V H O I T D O
 K O D Y O S I O J P M S K O D
 E O D O W B T L Z Q L M U X R
 U H W G E G N I R Y S I T Z R
 L W U Z L C M Y O A E W C T F

EAR TAGS
 EMASCULATOR
 HALTER
 HEAT LAMP
 HOOF TRIMMERS
 SCALES
 SYRINGE
 THERMOMETER
 TOWELS
 WOOL CLIPPERS

11. Match the following retail cuts with its wholesale part:

- | | |
|-----------------------|-------------|
| 1. _____ Sirloin Chop | A. Shoulder |
| 2. _____ Arm Chop | B. Rack |
| 3. _____ Rib Chops | C. Loin |
| 4. _____ Loin Roast | D. Leg |
| 5. _____ Lamb Paties | E. Breast |

12. If you give a lamb a shot in the muscle it is called a _____.

13. Find the following items on a feed tag:

LAMB STARTER
MEDICATED
 STARTER FOR GROWING LAMBS
 FOR THE PREVENTION OF COCCIDIOSIS
 CAUSED BY Eimeria ovina, Eimeria crandallis, Eimeria
 ovinoidalis, Eimeria ninakohlyakimovae, Eimeria parva
 AND Eimeria intricata IN SHEEP MAINTAINED IN
 CONFINEMENT.
ACTIVE DRUG INGREDIENT
 LASALOCID (AS LASALOCID SODIUM)
 90 G/TON
GUARANTEED ANALYSIS
 CRUDE PROTEIN MIN 20.00%
 CRUDE FAT MIN 2.50%
 CRUDE FIBER MAX 10.00%
 CALCIUM MIN 0.75%
 CALCIUM MAX 1.25%
 PHOSPHORUS MIN 0.55%
 SALT MIN 0.40%
 SALT MAX 0.90%
 SELENIUM MIN 0.30 PPM
 VITAMIN A MIN 2,000.00 IU/LB
INGREDIENT USAGE
 Processed Grain By-Products, Grain Products, Plant
 Protein Products, Forage Products, Roughage Products,
 Molasses Products, Ground Limestone, Salt, Lignin
 Sulfonate, Potassium Sulfate, Magnesium Sulfate,
 Magnesium Oxide, Sodium Selenite, Calcium Propionate,
 Vitamin E Supplement, Vitamin A Acetate, Vitamin D-
 3 Supplement, Zinc Sulfate, Zinc Oxide, Sodium Molyb-
 date, Manganese Oxide, Calcium Iodate, Cobalt Carbon-
 ate, Ferrous Sulfate.
FEEDING DIRECTIONS
 Lamb Starter contains 45 mgs. of lasalocid per pound.
 Feed continuously as the sole ration to growing lambs from
 1 to 6 weeks of age at the rate of 0.33-1.55 pounds per
 head per day to provide not less than 15 mgs. And not
 more than 70 mgs. Of lasalocid per head per day. Provide
 clean, fresh water at all times.
CAUTION
 The safety of lasalocid in unapproved species has not been
 established; do not allow horses or other equines access to
 lasalocid as ingestion may be fatal; feeding, undiluted or
 mixing errors resulting in excessive concentrations of
 lasalocid could be fatal to sheep.
MANUFACTURED BY:
 SKILLATHON FEEDS
 NET WEIGHT 50 POUNDS (22.7 KILOGRAMS)
 (SEE BACK OF FEED BAG FOR FEEDING INSTRUCTIONS)

Min % salt _____
Net Weight _____
Manufactured by _____
Vitamins it contains _____
Selenium _____