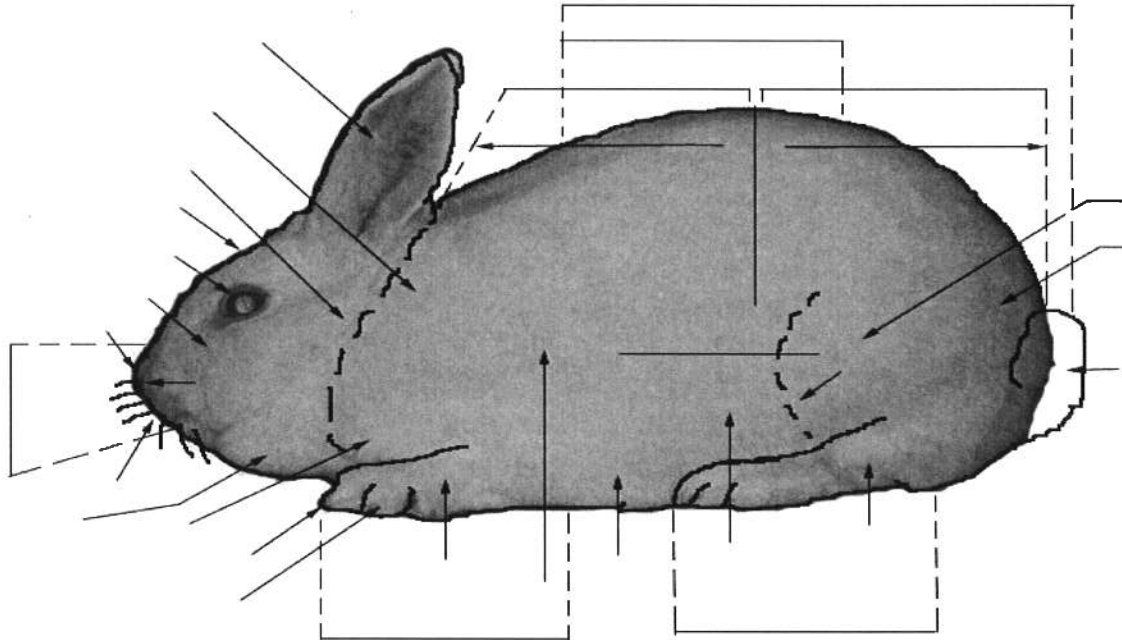


NEWTON COUNTY 4-H RABBIT QUESTIONS *GRADE 6*

1. Label the parts of the rabbit. You should have 31 answers.



2. The rabbit's nails are cut too short and start to bleed what do you do?
3. The birthing process in rabbits is called _____?
All newborn rabbits are called _____?
4. What kind of preparation should be taken place, six weeks before you show?
5. Describe Best of Breed (BOB), Best of Opposite, and Sex of Breed (BOSB)?