



Some manuals are used more than one year. An additional copy will cost \$1.00.

TABLE OF CONTENTS

	PAGE
I. GENERAL REQUIREMENTS	1-2
II. CHAMPION & STATE FAIR SELECTION	3
III. FINE ARTS	4
IV. NEEDLECRAFT	
Counted Cross Stitch	5-6
Plastic Canvas	7
Other Needlecraft: Needlepoint, Candlewicking, Hand Quilting, Hand Applique´, Tatting, Needle Tatting, Punch Needle, Chicken Scratching, Twilling, Huck Weaving, Crewel, Cutwork, Smocking, Knitting, Embroidery, Crochet, Huck Embroidery, Hemstitching	8
V. BASIC CRAFTS	
Candlemaking	9-10
Ceramics (this project has its own manual & record sheet)	
Decorated Wall Hangings	11
Fabric Crafts	12
Jewelry	13-14
Latch Hook	14
Model Building (this project has its own manual & record sheet)	
Recycling (this project has its own manual and record sheet)	
Wearable Art	15
Miscellaneous Crafts: Macramé, Wood Craft, Leather Craft, Metal Craft, Origami, Tole Painting, Basket Weaving, etc. (anything not listed as a Fine Art, Needlecraft, or Basic Craft can go in Miscellaneous Crafts)	16
VI. SAMPLE JUDGING SCORECARDS	17-18
VII. SAMPLE PROJECT DESCRIPTION CARD	18
VIII. ARTS & CRAFTS RECORD SHEET	19-20

I. GENERAL REQUIREMENTS

Welcome to the Elkhart County 4-H Arts and Crafts project! This manual contains the requirements for all Arts and Crafts levels. It is to be given to 4-H members only once, no matter how many years remain in the Arts and Crafts project. A new record sheet will be given each year.

There are three general categories within Arts and Crafts:

1. Fine Arts
2. Needlecraft
3. Basic Craft

4-H'ers may enroll in all three of these categories if they wish; however, a 4-H'er may only exhibit one article within each sub-category. For example, under Needlecraft there are two sub-categories: Counted Cross Stitch and Other Needlecraft. A 4-H'er could enter one project in Counted Cross Stitch and one in Other Needlecraft.

All Arts and Crafts exhibits must be finished and ready to use. Pictures must be framed and ready to hang, rugs bound, pillow tops stuffed and ready to use, etc. Those that are not finished will be marked down one ribbon grade.

If your exhibit is to be hung, follow exhibit requirements on page 4.

IT IS REQUIRED THAT A 3" x 5" PROJECT DESCRIPTION CARD ACCOMPANY ALL PROJECTS. THE CARD MUST LIST THE NAME, CLUB NAME, PROJECT NAME, MOST RECENT SCHOOL GRADE COMPLETED, TECHNIQUES AND MATERIALS USED, HOW THE ARTICLE WAS MADE, AND HOW YOU WILL USE OR DISPLAY THE ARTICLE. A SAMPLE CARD IS FOUND ON PAGE 18.

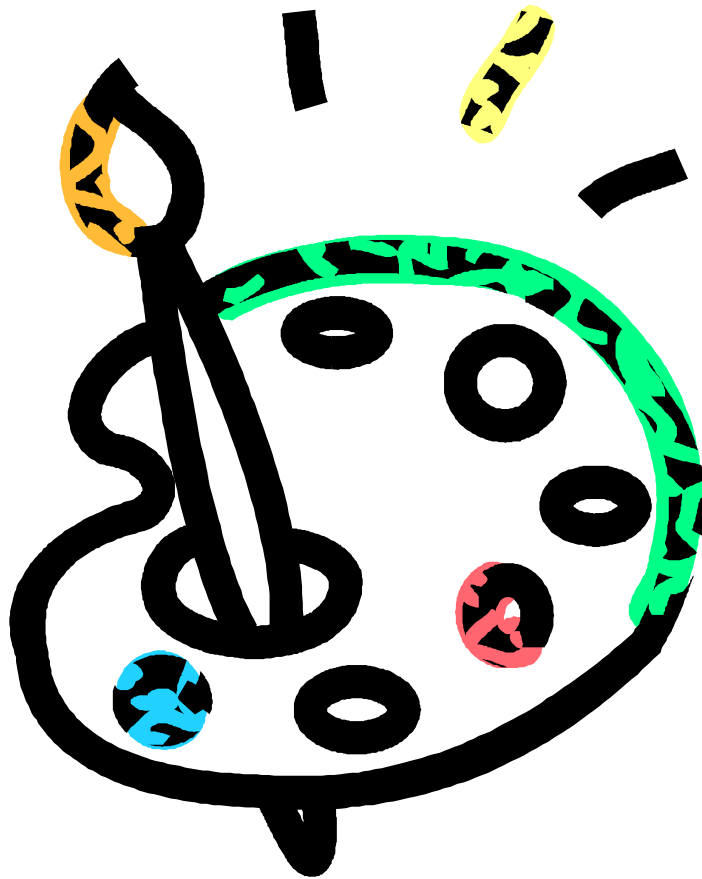
To complete the project, follow the level and exhibit requirements listed in this manual for the art or craft you have selected. Fill out the record sheet completely and give it to your club leader to grade. Enter your project at the ECCC, Elkhart County Fairgrounds on the date as stated in the fair book.

HELPFUL TIPS

- The use of kits is discouraged in any category except Level A.
- Have fun with your project. Be creative and original. Do your own work. Don't copy others.
- Suggested projects are only suggestions.
- If you have any questions about whether your project is suitable for the Fair, ask your 4-H leader before you start working on the project.

JUDGING TIPS

The school grade of the member will be considered when judging the article. Exhibits will be judged according to usefulness, suitability of design, workmanship, finish, and use of color.



II. ARTS AND CRAFTS CHAMPION & STATE FAIR SELECTION

Elkhart County may send twelve craft entries to the State Fair. The entries will come from the following categories:

FINE ARTS (two entries per county)

Oil, charcoal, pastels, pencil, ink, acrylic, or watercolor – on canvas, canvas board or paper, framed as a picture and ready for hanging.

NEEDLECRAFT (handwork) (two entries per county)

Knitting, embroidery, crocheting, needlepoint, crewel, candlewicking, chicken scratching, quilting, tating, huck weaving, hemstitching, and pulled, drawn, and counted thread work. If article is to be hung, it must come prepared for hanging.

MODEL CRAFT (two entries per county)

A small scale replica.

ANY OTHER CRAFT (six entries per county)

MAY NOT include any crafts included in the three classes listed above.

Champions and Reserve Champions will be selected from the honor groups of each sub-category as follows:

Level A (grades 3 & 4) – one Champion, one Reserve Champion

Level B (grades 5 & 6) – one Champion, one Reserve Champion

Level C (grades 7, 8, 9) – one Champion, one Reserve Champion

Level D (grades 10, 11, 12) – one Champion, one Reserve Champion

State Fair entries will require completion of the State Fair 4-H Craft Information Card (4-H-618-W).

All projects are judged by the grade of the exhibitor in the year in which they finish the project. For example, if Johnny is in the 5th grade in the 2018-2019 school year, his project will be entered as a 5th grader at the 2019 Elkhart County 4-H Fair.



III. FINE ARTS

PROJECT REQUIREMENTS:

1. Use any of the following media:
Ink, Pencil, Charcoal, Chalk, Oil, Watercolor, Acrylic Spray Paint or Pastels.
2. Select or prepare background material (canvas, canvas board or paper – framed as a picture – prepared for hanging) suitable for the medium chosen. Canvas art on a wooden frame is considered prepared for hanging provided that frame has a hanger. Hanger must be suitable for size and weight of picture.
3. Select a subject appropriate for the background, your interest, and experience. A beginner will start by selecting a simple subject, such as shapes only. **SUBJECT MATTER SHOULD BE APPROPRIATE FOR FAMILY VIEWING (G-RATED).**
4. Prepare a simple plan of what you will do, considering space and color relationships.
5. Experiment with equipment and techniques for using medium selected.
6. Try several pictures.
7. Experiment with matting and framing the finished picture. Consider color, texture, depth, and weight.

Note – Projects will be judged by the following grade categories:

Level A: 3rd – 4th grade

Level B: 5th – 6th grade

Level C: 7th – 9th grade

Level D: 10th – 12th grade

EXHIBIT REQUIREMENTS:

1. Exhibit one picture in Fine Arts.
2. **THE PICTURE MUST BE FRAMED AND READY FOR HANGING** in a plastic, metal, wood, or other rigid frame with or without matting. The use of pop tabs, paste-on hangers, scotch tape, masking tape, and string **ARE NOT** considered durable or secure hanging methods. If your exhibit is not ready for hanging, it will be marked down one ribbon grade.
3. Your exhibit label must indicate the number of years enrolled in Fine Arts, your age, and grade.
4. The 4-H member may enroll year after year, assuming that he/she will progress in mastering skills.
5. Exhibit will be judged by grade of the 4-H'er in the year completed.
6. If copying a picture for exhibit (such as a photograph), include the original with your finished project. Mount it on the **BACK** of your exhibit. **THE USE OF COPYWRITED MATERIAL IS STRONGLY DISCOURAGED.**

REFERENCES: How to Frame a Picture – HE-404
 Painting – 4-H-180

IV. NEEDLECRAFT

COUNTED CROSS STITCH

1. See General Guidelines.
2. The article you exhibit must be finished and ready to use – a picture must be framed, with or without matting, and ready for hanging, pillows must be stuffed and finished, etc.
3. In the advanced divisions you are encouraged, but not required, to use original designs.
4. Suggested projects are only suggestions.

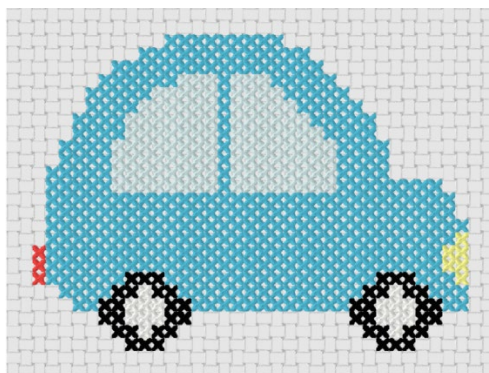
LEVEL A (grades 3 & 4)

1. Learn the basic cross stitch and backstitch.
2. Learn how to read a graph.
3. Practice your cross stitch skills by making two or more articles to gain experience in working cross-stitch from a graph. Backstitch may be used, but should be kept to a minimum. Use cotton floss and work on 6 count Herta, or 11 or 14 count Aida.
4. Exhibit one article using counted cross stitch and backstitch. Work from a graph on 14 count Aida using cotton floss. Be sure your design includes some shading. Design size must be no larger than 20 square inches (i.e. 4" x 5", 10" x 2", etc.). Exhibits larger than this size will be marked down one ribbon grade.

Suggested projects: Picture, jar lid cover, pincushion, bib, Christmas ornament, bookmark, tea towel, bell pull, placemat, pillow.

LEVEL B (grades 5 & 6)

1. Exhibit one article using counted cross and backstitch. Work from a graph on 14 or 16 count Aida cloth. Be sure your design includes some shading and is more complicated each year.
2. You may use $\frac{3}{4}$ or $\frac{1}{2}$ stitches and colored Aida cloth.
3. Design size should be no smaller than 20 square inches (4" x 5", 2" x 10", etc.). Exhibits that do not meet this size requirement will be marked down one ribbon grade.



LEVEL C (grades 7, 8, 9)

1. Exhibit one article of counted cross stitch with backstitching and shading, using cotton floss on 14, 16, or 18 count Aida cloth. You may use $\frac{1}{2}$ stitch or $\frac{3}{4}$ stitch. Danish flower thread, metallic thread, or silk thread may also be used.
2. Dark colored fabric may be used.
3. A more difficult graph should be used each year.
4. Design size should be no smaller than 20 square inches (4" x 5", 2" x 10", etc.). Exhibits that do not meet this size requirement will be marked down one ribbon grade.

Suggested projects: Pillow, picture, table runner, dresser scarf, tote bag, banner, baby afghan, Christmas stocking.

LEVEL D (grades 10, 11, 12)

Club member must complete a different and more difficult project each year.

1. Exhibit one article of counted cross stitch with complicated graph OR work out an original design. Use cotton floss, Danish flower thread, metallic thread, silk thread, or narrow ribbon (1/8" wide). You may also use $\frac{1}{2}$ stitch, $\frac{3}{4}$ stitch, or other stitches. Work on 18 count Aida or 22 count Hardanger cloth, perforated paper, or even weave linen. Design size should be no smaller than 100 square inches minimum (10" x 10"). Exhibits that do not meet this size requirement will be marked down one ribbon grade.

Suggested techniques are: Blackwork (different patterns filling in a design on even weave fabric), Assisi (background filled in and design plain), pulled thread, drawn thread, Hardanger, or other stitches. Beads may be used in this level.

Suggested projects: Large picture, tablecloth, large complicated sampler, large afghan, tree skirt, band sampler, or Christmas stocking (full scene).

REFERENCES: ABC of Counted Cross Stitch – Coats & Clark
How to Finish Needlecrafts – Coats & Clark



PLASTIC CANVAS

1. See General Requirements.
2. The article you exhibit must be finished and ready to use.

LEVEL A (grades 3 & 4)

1. Learn to make straight cuts on plastic canvas.
2. Learn to make simple stitches (continental, half cross, and overcast).
3. Keep designs simple.
4. Exhibit one article you have made.

Suggested projects: book mark with/without yarn tassel or a small refrigerator magnet.

LEVEL B (grades 5 & 6)

1. Learn to make intricate cuts.
2. Learn to make three stitches (continental, slanted gobelin, mosaic) and overcast stitch.
3. Learn to connect a minimum of three pieces of cutwork.
4. Exhibit one article you have made.

Suggested projects: a note holder for refrigerator or to lay by the phone, Christmas tree ornaments, square tissue box cover, trinket box with cover, or a vase for a potted plant.

LEVEL C (grades 7, 8, 9)

1. Use techniques learned in previous divisions increasing in difficulty.
2. Learn to make additional connections.
3. Use at least three types of stitches with a minimum of four colors of yarn.
4. Exhibit your completed project.

Suggested projects: wall hanging, wreath, book cover, picture frame, set of round or square coasters with holder.

LEVEL D (grades 10, 11, 12)

1. Use techniques learned in previous divisions increasing in difficulty.
2. Learn to use more intricate casting.
3. Exhibit your completed project.

Suggested projects: miniature room with furniture, clock, etc.

OTHER NEEDLECRAFT

This category may include: Needlepoint, Candlewicking, Hand Quilting, Hand Appliqué, Tatting, Needle Tatting, Punchneedle, Chicken Scratching, Twilling, Huck Weaving, Crewel, Cutwork, Smocking, Knitting, Embroidery, Crochet, Huck Embroidery, Hemstitching, drawn and counted thread work, or any other technique done using a needle by hand. Does not include latch hook, plastic canvas, machine knitting, machine quilting or arm knitting/crocheting.

Projects completed on hand looms such as Knitting Knobby, Knifty Knitter, Knitting Jennie, etc., do not qualify for this category and should be entered in Miscellaneous Crafts.

1. See General Guidelines.
2. The article you exhibit must be finished and ready to use (a picture must be framed, with or without matting, and ready to hang, pillows must be finished, etc.).
3. In the advanced divisions you are encouraged, but not required to use original designs.

LEVEL A (grades 3 & 4)

Club member must demonstrate knowledge of basic skills pertaining to your specific technique. Make two or more small articles and exhibit one of them.

LEVEL B, C, D (grades 5 - 12)

Club member must demonstrate progress in your chosen technique by doing larger and more complex projects each year. Continue using progressively more difficult stitches and stitch combinations. Make and exhibit one article or set of articles that shows an improvement on skills and increased application of color and design.

REFERENCES: ABC of Candlewicking – Coats & Clark
ABC of Crochet – Coats & Clark
ABC of Embroidery – Coats & Clark
ABC of Embroidery – Gingham
ABC of Knitting – Coats & Clark
ABC of Needlepoint – Coats & Clark
ABC of Strip Piecing & Strip Quilting – Coats & Clark
How to Finish Needlecrafts...Frames, Mats, Hoops – Coats & Clark



V. BASIC CRAFTS

CANDLEMAKING

No gel candles can be exhibited in Candlemaking. Since gel candles do not require the same heating and molding techniques as wax or paraffin candles, they do not meet the requirements for this project.

1. See General Requirements for Crafts.
2. All candles in Level B and above should have a sturdy base.
3. In this project you will learn to make good quality candles that can be useful and decorative. You will use different types of wicks, colors, and scents. You will have better results if you use candle wax instead of paraffin. In all divisions the following goals should be kept in mind:
 - a. Uniformity of color
 - b. Absence of air bubbles
 - c. Smoothness of surface
 - d. Finish of seams
 - e. Finish of bottom where wick is inserted
 - f. Balance and creativity
4. Candles for decoration only should be labeled as such.
5. See Candle Making handout for more details and tips.

LEVEL A (grades 3 & 4) – Patio Candles

1. Learn to melt wax and get good color, shape, and quality in the candle, plus set the wick properly.
2. Experiment with different types of containers to make permanent patio candles. A patio candle is a candle that has been poured in a permanent container with a wick in the center, and that has not been decorated in any way. Types of containers are limited only by the imagination – glass jars, metal cans, etc.
3. Exhibit one patio candle in its container. Candles should be one solid color.

LEVEL B (grades 5 & 6) - Undecorated Molded Candles

1. The aim is to learn the basics of making candle molds. Candles are not to be decorated or painted, just plain.
2. You will need to make poured candles using plain or simple molds in a solid color. Use rigid plastic, glass, or metal molds. Wax containers will leave an undesirable film on the finished candle. Examples of molds could be bottles, cans, jars, etc.



Ice Candle or Layered Candle

1. Ice candles – made using wax and ice.
2. Layered candles – a minimum of three pourings. Layers must be visible.

Exhibit one undecorated candle removed from the mold **OR** one ice candle removed from the mold, **OR** one layered candle removed from the mold. Candle needs to be displayed on a sturdy base.

LEVEL C (grades 7, 8, 9)

Whipped Candles

1. Learn to whip and use whipped wax in candles.
2. Experiment and make several candles using whipped wax.
3. Examples of candles with whipped wax are: snowball candles, picture candles, sodas, sundaes, and frosted Christmas trees.

Decorated Molded Candles

1. The aim is to increase experience in making candles and improve the quality of workmanship of the base and decoration done with simple molds. Use a combination of skills obtained in previous divisions.
2. Candles can be decorated with paint, whipped wax, wax flowers, glitter, sand, sequins, rub & buff, etc.

Exhibit one decorated candle made with whipped wax **OR** a molded candle that has been decorated. Candle needs to be displayed on a sturdy base.

LEVEL D (grades 10, 11, 12)

1. Learn to combine candles with other materials and use more advanced molds with skills learned in earlier years.
2. Make centerpieces and displays that may be seasonal or for all occasions.
3. Candles may be combined with greenery, flowers, pottery, glass, etc.

Exhibit a candle that has had decoration added and is suitable for a table arrangement, centerpiece, or room decoration. Candle needs to be displayed on a sturdy base.

“The Encyclopedia of Candle Making Techniques” is available as a reference book for any 4-H member to check out. The book may be checked out for 2 weeks at a time.



DECORATED WALL HANGING

The project is to be judged based on overall appearance and skill.

Article(s) must be ready to hang. Hangers must hold the weight of the article. Pop-tabs are not acceptable as hangers. It is best if the hanger is hidden and does not detract from the appearance of the article.

Members are encouraged to experiment with beads, lace, ribbon, different types of wreaths, dried materials, potpourri, silk flowers, wire, metal, burlap, vinyl lettering (signs), canvas (not painting & drawing), etc.

LEVEL A (grades 3 & 4)

Exhibit one finished article that shows basic learning skills for a given technique. Finished article should be no smaller than 4" x 4" (16 square inches) and no larger than 25" x 25" (625 square inches). **Article(s) must be ready to hang.**

Suggested projects include: Simply decorated wreath or hat which includes a self-made bow, simple paper twist article, clock, message board, key holder, pressed flowers, quilling or boards.

LEVEL B (grades 5 & 6)

Exhibit one finished article that shows an improvement of skills and application of color or design. Finished article should be no smaller than 6" x 6" (36 square inches) and no larger than 35" x 35" (1225 square inches). **Article(s) must be ready to hang.**

Suggested projects include: Decorated wreath or hat which includes a self-made bow, masquerade mask, clock, message board, key holder, tole painting, board, doors or windows.

LEVEL C (grades 7, 8, 9)

Exhibit one finished article that shows an advancement of skills and application of color or design. Finished article should be no smaller than 6" x 6" (36 square inches) and no larger than 35" x 35" (1225 square inches). **Article(s) must be ready to hang.**

Theme required. Holiday or special occasion themed. Include holiday/special occasion on card.

LEVEL D (grades 10, 11, 12)

Exhibit one finished article that shows an advancement of skills and application of color or design. Finished article should be no larger than 52" x 52" (2704 square inches). **Article(s) must be ready to hang.**

Suggested projects include: A grouping of up to three items (a grouping of up to three (3) items is considered one (1) finished article), message board, clock, locker organizer, stained glass, tole painting, windows or doors.

FABRIC CRAFT

All articles must be finished and ready to use. Items may be sewn by hand or machine, glued, tied, knotted, etc. Projects must be made by the 4-H'er and not purchased and decorated. Items that meet Sewing Non-Wearable requirements should be exhibited in Sewing.

It is required that a 3" x 5" card accompany all projects. Card must include the 4-H member's name, club name, project name, grade completed, materials used, how the article was made, and how the article will be used. See the Elkhart County Arts & Crafts manual for the sample card.

Make useful articles. Be creative and original. Articles will be judged primarily on design and decoration.

Suggested projects include: quiet books, purses, shopping bags, costume pieces, wall hangings, quilts, quilted items, hats, dolls, doll clothes, teddy bears, teddy bear & animal clothing, no-sew fleece items.

Level A (grades 3 & 4) and **Level B** (grades 5 & 6)

Exhibit one article that shows basic learning skills for the craft. Original designs, simple preprinted fabric projects, simple kits, no sew fleece or patterns may be used in Levels A & B.

Level C (grades 7, 8, 9) and **Level D** (grades 10, 11, 12)

Exhibit one article or set of articles that shows an improvement of skills and application of color or design. Original designs or altering of patterns is encouraged. Special occasion, seasonal items and embellishments (such as glued on jewels, iron on appliqués, trims, and beads) may be used. Advanced preprinted fabric projects and advanced kits may be used in Levels C & D. Original designs, simple preprinted fabric projects, simple kits, no-sew fleece items or patterns can only be exhibited in Levels A & B.



JEWELRY

Jewelry is the art of creating personal adornment with materials such as but not limited to: metal, glass, and clay. All Jewelry will be judged on workmanship appearance and creativity. All Jewelry exhibits must be mounted on a black covered board or black jewelry mannequin-style stand, either free-standing or with an easel back, no smaller than 3" x 5" nor larger than 12" x 12". All pieces should be on one display board/stand. Jewelry should not be covered, thus keeping the entire project visible and accessible to be judged. Exhibit **MUST** include a card with list of materials used, techniques used, and what you learned while doing this project. Failure to follow exhibit guidelines will result in a reduction in the scoring.

List of Jewelry pieces that can be exhibited: Bracelet, Necklace, Pair of Earrings, Pin, Ring, Hair Accessories, and Chatelaine. Before placing any jewelry pieces on the boards, please wear it to make sure it is wearable and lays correctly and comfortably.

Level A (3rd – 4th Grade)

Exhibit 1 or 2 pieces of jewelry from the list that shows basic skills that were learned. **Kits are allowed.** Use appropriate closures. The piece should be color coordinated, but can be made from multiple materials that coordinate. Display on appropriate size black display board or mannequin, with description card. Display must be no larger than 12" x 12".

Level B (5th – 6th Grade)

Exhibit 2 or 3 pieces of jewelry. Pieces do not need to match each other. Members are encouraged to try different techniques such as macramé, bead weaving, multiple strand, crimp covers, etc. **Kits are allowed.** Members should be using a clasp; no knots, no stretchy string, and not your parents' fishing line. You should be using beading wire. Display on appropriate size black display board or mannequin, with description card. Display must be no larger than 12" x 12".

Level C (7th – 9th Grade)

Exhibit at least 2 pieces of jewelry. At least 1 piece should be an original piece with a pattern included and at least 1 published pattern with pattern included. Patterns can be found online, in beading books at craft stores and in beading magazines. Original designs may also be used. **Original patterns should include a supplies list, techniques used, step by step instructions and are to be written by the 4-H member and not a published pattern.** Pieces do not need to match but show different techniques the member has learned. Clasp must be used at this level. **No kits are allowed.** Display on appropriate size black display board or mannequin, with description card. Display must be no larger than 12" x 12". Please designate if design is from a pattern or an original design. **For published patterns, please print or copy them and give credit to designer in a copyright format. Examples: Source: wigjig.com Source: firemountaingems.com. ALL PIECES MUST HAVE A PATTERN!**

Level D (10th – 12th Grade)

Exhibit 3 or 4 pieces of jewelry. The pieces do not need to match each other but show different techniques that the member has learned. Members are encouraged to try advanced skills, such as: wire wrapping, double crimping, headpin loops, making

clay beads, looming, etc. Two pieces should be original designs, and original piece must have pattern written by the 4-H member on 8 ½" x 11" paper in an envelope, turned in with the project. **No kits allowed.** Display on appropriate size black display board or mannequin, with description card. Display must be no larger than 12" x 12". **For published patterns, please print or copy them and give credit to designer in a copyright format. Examples: Source: wigjig.com Source: firemountaingems.com. ALL PIECES MUST HAVE A PATTERN!**

LATCH HOOK

1. See General Guidelines.
2. The article you exhibit must be finished and ready to use (i.e. wall hangings must be ready to hang with rod, hanging wire, etc., rugs must be bound **AND** backed with latex adhesive, pillows must be finished, etc.). Keep in mind that shaped articles are more difficult than square ones.
3. Members may use rug patterns, kits, or develop their own original design. If you are using your own original design, start with a blank canvas and create or develop a design. A design can be taken from another picture by tracing onto tracing paper. A proportion can then be created by using grids to fit your article size. The original drawing or picture should accompany the finished latch hook article.

LEVEL A (grades 3 & 4)

Exhibit one item up to 225 square inches. * Members may use rug patterns or kits. No original designs are necessary in this division.

LEVEL B (grades 5 & 6)

Exhibit one item over 225 square inches and up to 576 square inches. * Members may use rug patterns or kits. No original designs are necessary in this division.

LEVEL C (grades 7, 8, 9)

Exhibit one item 225 - 720 square inches. * Item may be of an irregular shape. Members may use rug patterns, kits, or develop their own original design. Hilo kits and designs are also acceptable.

LEVEL D (grades 10, 11, 12)

Exhibit one large article (over 576 square inches) or a set of articles. In this level it is the design, workmanship, etc. that counts, not the size. This level may include an exhibit of sets of articles, such as bath sets, etc.

* To find the size of your article in square inches, multiply the width of the design by the height of the design (i.e. 15 x 15 = 225 square inches; 18 x 18 = 324 square inches; 16 x 20 = 320 square inches; 24 x 24 = 576; 20 x 36 = 720 square inches; etc.).



WEARABLE ART

Wearable Art includes an article of clothing that can be worn that is creatively decorated OR an accessory worn or carried. See level requirements below for specific exhibit requirements.

1. Exhibit must have been completed after the previous fair.
2. Exhibits should show a great degree of difficulty each year.
3. Cross-stitching does not fit into this category. It has its own division.
4. Clothing including items such as a t-shirt, sweat shirt, jumper, skirt, pair of pants, pair of shorts, or apron.
5. An accessory includes such items as a tote bag, hat, shoes, pair of socks, or a belt. Hair accessories and jewelry may be exhibited only if part of an ensemble.
6. Examples of acceptable techniques for wearable art include:
Tie-dye, sponge painting, colorpoint, fusible applique with paint finished or machine finished, free hand painting, fabric painting, jeweled designed (five or more colors or styles of jewels), embellishments (beads, studs, jewels, etc.)

****MAKE SURE THE TECHNIQUE SELECTED IS ONLY ON THE REQUIRED NUMBER OF SIDES OF THE ARTICLE. REVIEW THE REQUIREMENTS OF LEVEL A-D BEFORE DECORATING YOUR EXHIBIT ****

You may use an original design or variation of a pattern or patterns. You may use specialty threads or embellishments. Use your imagination!

Level A (3rd - 4th Grade)

Exhibit a finished article of clothing (see list from #4 above) decorated on one side only, front or back.

Level B (5th - 6th Grade)

Exhibit a finished article of clothing (see list from #4 above) with no more than three separate decorated areas per article OR a tote bag with no more than three separate decorated areas. Example: front and back and/or sleeves.

***Kits are not encouraged.**

Level C (7th - 9th Grade)

Exhibit a finished article of clothing (see list from #4 above) AND one accessory (see accessory list in #5 above). **NO KITS.**

Level D (10th - 12th Grade)

Exhibit an ensemble of three or more articles (including decorated accessories). **NO KITS.** Hair accessories and jewelry are included only if part of an ensemble. You may use an original design or variation of a pattern or patterns. You may use specialty threads or embellishments. Use your imagination!

MISCELLANEOUS CRAFTS

If the project is to be judged on overall appearance, it should be exhibited as **Decorated Wall Hanging**. If the project is to be judged based on a specific technique or skill, it should be exhibited in **Miscellaneous Crafts**.

1. Exhibit any craft **NOT** listed in another project area. Crafts eligible for exhibition under listed categories, such as Decorated Wall Hanging, Fine Arts, Candles, Recycling, etc. must be exhibited in that category. Failure to meet a requirement of a project (i.e. no hanger for wall hanging) does not constitute being exhibited as Other Misc. Craft. Examples of Other Misc. Craft include items such as, but not limited to Leather Craft, Basket Weaving, Wooden Quilts, etc.
2. Examples of Miscellaneous Crafts are: woodcraft, macramé, leathercraft, metal art, nature craft, string art, origami, felt craft, quilling, stained glass, enamel craft, paper maché, glass etching, stenciling, paper snipping, basket weaving, tube painting, tole painting, plaster of Paris forms, etc. Projects completed on hand looms such as Knitting Knobby, Knifty Knitter, Knitting Jennie, etc., should be entered in this category and not in Other Needlecraft.
3. Articles should be ready to use (hanging articles need to be ready for hanging, etc.). **See Fine Arts: Exhibit Requirements #2, page 4, for hanging instructions.**

LEVEL A (grades 3 & 4)

Exhibit one article that shows the basic learning skills for the craft. **Framed puzzles may be exhibited in Level A only.**

LEVEL B, C, & D (grades 5 – 12)

Exhibit one article or set of articles that shows an improvement of skills and application of color and design.

REFERENCES: Appliqué – Coats & Clark
Basket Weaving
Leathercraft
Quik Knots – A Guide for Macramé
Silk Screen
Tube Painting



4-H CRAFTS SCORECARD

Name _____	Level			Grade _____
Exhibit Requirements	Excellent	Good	Needs to improve	Comments
Usefulness				
Originality				
Choice of Material				
Suitability of Design				
Structural				
Decorative				
Workmanship				
Finish				
Use of Color				
Placing (circle one)				
Champion Honor Blue Red White				

Name _____
 Club/Grade/Division _____

4-H 681b-W
3/00

4-H NEEDLECRAFT SCORECARD

REQUIREMENTS for Indiana State Fair
 Handwork using a needle. Includes knitting, embroidery, crocheting, needlepoint, crewel, candle wicking, chicken scratching, quilting, tatting, huck embroidery, hemstitching, etc. Does not include latch hook or plastic canvas. If the article is to be hung, it must come prepared for hanging.

Evaluation of project	Excellent	Good	Needs Improvement
SELECTION			
Color combination			
Choice of design			
Choice of yarn or thread			
Choice of fabric			
Interest of texture			
WORKMANSHIP			
Knots, Tails, Yarn/Thread wear			
Stitching variety			
Tension			
Uniformity of stitches			
Yarns laying on canvas or linen correctly			
FINISHING			
Cleanliness			
Pressing/Blocking			
Choice of frame &/or Matting (if applicable)			
Choice of edging			
FOLLOWED EXHIBIT REQUIREMENTS			
COMMENTS:			

Name _____
 Club/County _____

4-H 681d-W
 1/97

4-H FINE ARTS SCORECARD

REQUIREMENTS for Indiana State Fair

Oil, charcoal, pastels, pencil, ink, acrylic, or watercolor . . . on canvas,
 canvasboard, or paper . . . framed as a picture and prepared for hanging.

Evaluation of project	Excellent	Good	Needs Improvement
PICTURE			
Originality			
Composition			
Color Relationships			
Values			
Intensities			
Workmanship			
Proper Protection			
MAT (if used)			
Color to harmonize with picture			
Size and proportion			
FRAME			
Color			
Texture			
Weight			
Construction			
Hanger			
COMMENTS:			

SAMPLE PROJECT DESCRIPTION CARD

Name _____
 Club _____
 Project _____ Level _____

Circle Most Recent Grade Completed

3 4 5 6 7 8 9 10 11 12

Techniques & materials used _____

How article was made _____

How will I use or display this article _____



Elkhart County
4-H ARTS & CRAFTS RECORD

Check area of interest selected

- Fine Arts
- Needlecraft
- Basic Crafts

List specific art or craft _____

Division _____

Name _____ Grade _____

Name of Club _____ Year in club work _____

I have reviewed this record and believe it to be correct.

Signature of leader _____ Date _____

What skills did you learn or improve upon this year?

What did you find most difficult in completing this project? What would you do differently?

Where did you receive information or instruction in this project?
(List persons who gave instruction, reference material, etc.)

4-H ARTS & CRAFTS RECORD continued

Name of article _____

Materials Purchased	Where	Cost

Total Cost _____

When was the article started? _____ Total hours spent on article _____

When finished? _____ How is the article to be used? _____

Name of article _____

Materials Purchased	Where	Cost

Total Cost _____

When was the article started? _____ Total hours spent on article _____

When finished? _____ How is the article to be used? _____

Purdue University is an affirmative action, equal access/equal opportunity institution.