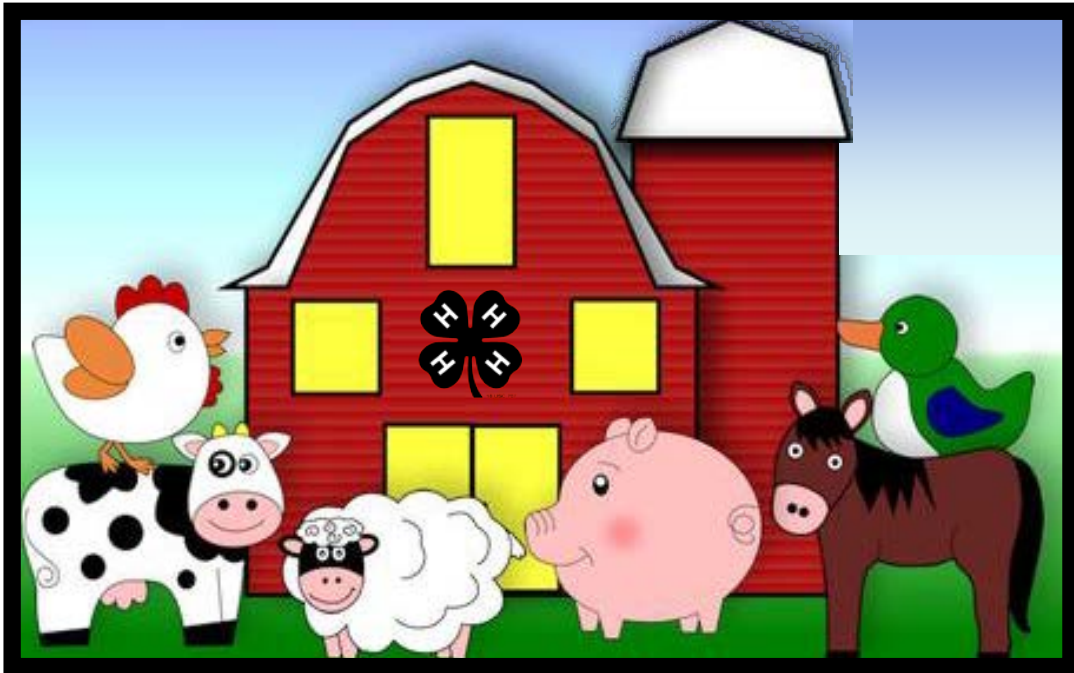


Mini 4-H Farm Animals

All Divisions



**Draft Developed by
Purdue University Cooperative Extension Service
Area VII 4-H Youth Development Educators**

(Blackford, Delaware, Fayette, Franklin, Henry, Jay, Madison, Randolph, Rush, Union, & Wayne Counties)

PURDUE AGRICULTURE

It is the policy of the Purdue University Cooperative Extension Service that all persons have equal opportunity and access to its educational programs, services, activities, and facilities without regard to race, religion, color, sex, age, national origin or ancestry, marital status, parental status, sexual orientation, disability or status as a veteran. Purdue University is an Affirmative Action institution. This material may be available in alternative formats.

PURDUE
UNIVERSITY

Purdue Extension
Knowledge to Go
1-888-EXT-INFO

Order or download materials at the *Purdue Extension Education Store* • www.extension.purdue.edu/new

Reviewed and Edited by Area 7 Extension Educators

Rae Ann O'Neill, CED, 4-H Youth Development, Blackford County
Rich Chalupa, 4-H Youth Development, Delaware County
Bethany Ratts, 4-H Youth Development, Henry County
Jane Richards, 4-H Youth Development, Delaware County
Jonathan Ferris, CED, ANR, 4-H Youth Development, Fayette County
Cindy Hartman, CFS, 4-H Youth Development, Fayette County
Cara Kobza, 4-H Youth Development, Jay County
Gary Simmons, 4-H Youth Development, Madison County
Beth Leonhard, 4-H Youth Development, Madison County
Laura Mickler, CFS, 4-H Youth Development, Randolph County
Dan Kirtley, CED, ANR, 4-H Youth Development, Randolph County
Kristie Amos, CED, 4-H Youth Development, Rush County
Jennifer Logue, CED, ANR, 4-H Youth Development, Union County
Debra Searcy, CED, 4-H Youth Development, Wayne County

Compiled by

Angie Riffle CED, Extension Educator, 4-H Youth Development, Franklin
County

Sources

JANUARY 1998
REVISED, NOVEMBER 1998
REVISED, JANUARY 2009



Mini 4-H Parent's Page



Welcome to the Mini 4-H Program! Mini 4-H is designed for youth to explore a variety of project areas.

Your child received this project manual when enrolling in Mini 4-H. This manual will provide fun, age-appropriate learning activities throughout their year(s) in Mini 4-H and their interest in this project.

As a Mini 4-H parent, your job will be to guide and encourage your child through the activity. It is highly suggested that you do not complete the activities for them. Instead, help them, guide them, work with them, and let them do all that they possibly can. The 4-H Program encourages "learn by doing ...and is the best educational tool that we can provide for youth.

Additionally, the Mini 4-H program is set up to allow your child to exhibit a project at the 4-H Fair. This project is based upon information within this manual.

The 4-H Fair is an exciting time for 4-H members and families. It is a week that allows community youth to showcase their talents, interests and enthusiasm for learning.

Mini 4-H is fun! Your child will certainly enjoy it. You can have fun too, by guiding and helping as your child participates in the program. Encourage and praise your child as he/she has fun learning and sharing with you.

If you have any questions regarding Mini 4-H or other 4-H programs, please feel free to contact your local Extension Office.



Mini 4-Her's Page



Welcome to Mini 4-H! You are now a member of the 4-H family. You are a special person.

Mini 4-Her's have lots of fun! There are lots of activities for you to explore. You can try new things. You can share it with your friends and family.

Mom, Dad or another adult can help you with your project. Bring your project to the 4-H Fair and lots of people will be able to see what you have done. You also get a ribbon made just for Mini 4-Her's.



Here are some things to know about 4-H.

The 4-H Symbol: A four-leaf clover with an "H" in each leaf

4-H Colors: Green and White

The 4-H Motto: To make the best, better.

The 4-H Pledge: I pledge my *Head* to clearer thinking,
my *Heart* to greater loyalty,
my *Hands* to larger service, and
my *Health* to better living,
for my club, my community,
my country, and my world.

Farm Animals

There are many kinds of farm animals. People have farm animals for fun and to make money. Do you have a farm animal at home? What is it? What kind of farm animal do you think might be fun to have?

Here are some animals we see on farms:

- Beef cow
- Dairy cow
- Goat
- Chicken
- Rabbit
- Sheep
- Pig
- Horse

Activity 1 - Name the Farm Animal

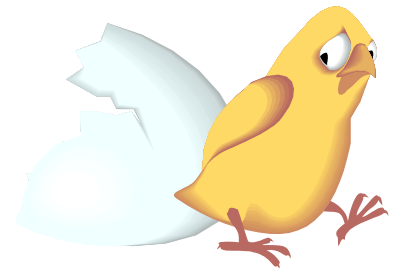
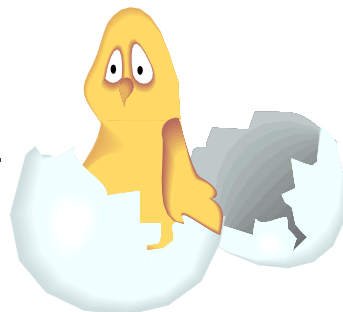
You will need:

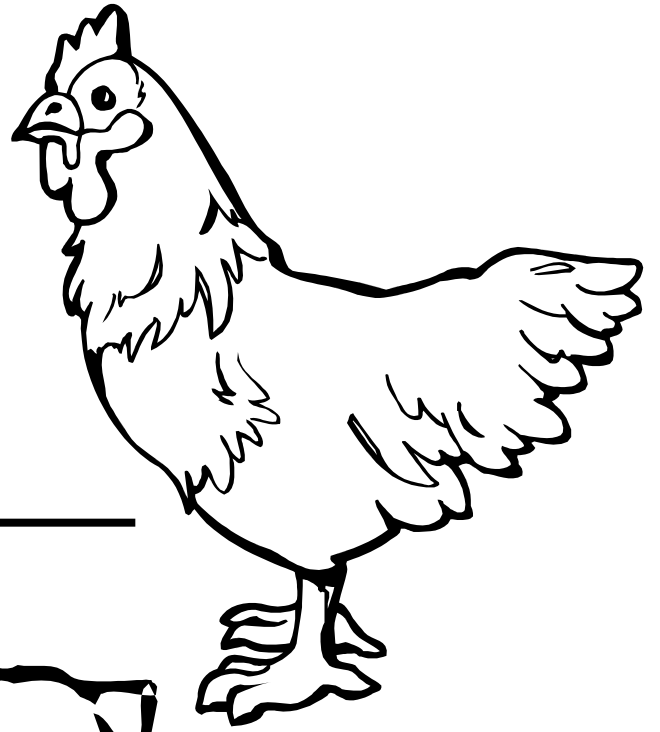
- Pencil
- Crayons, markers, or colored pencils
- The animal pictures on the next four pages



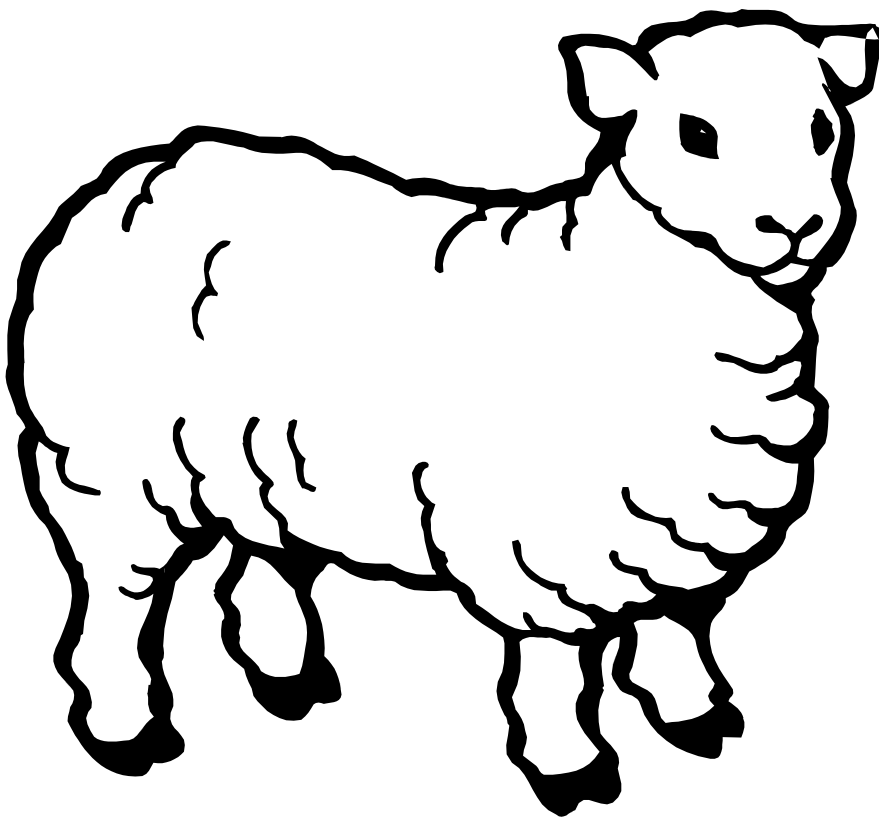
Here is what to do:

1. Look at the pictures of farm animals on the next four pages. Look at the names of farm animals above.
2. Write the name of the farm animal under the right picture.
3. Color the pictures.

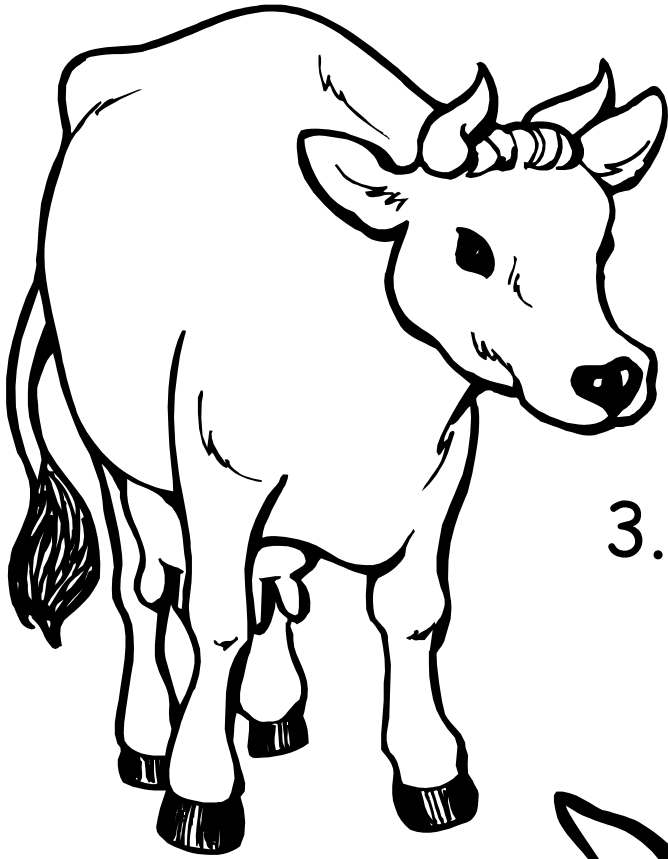




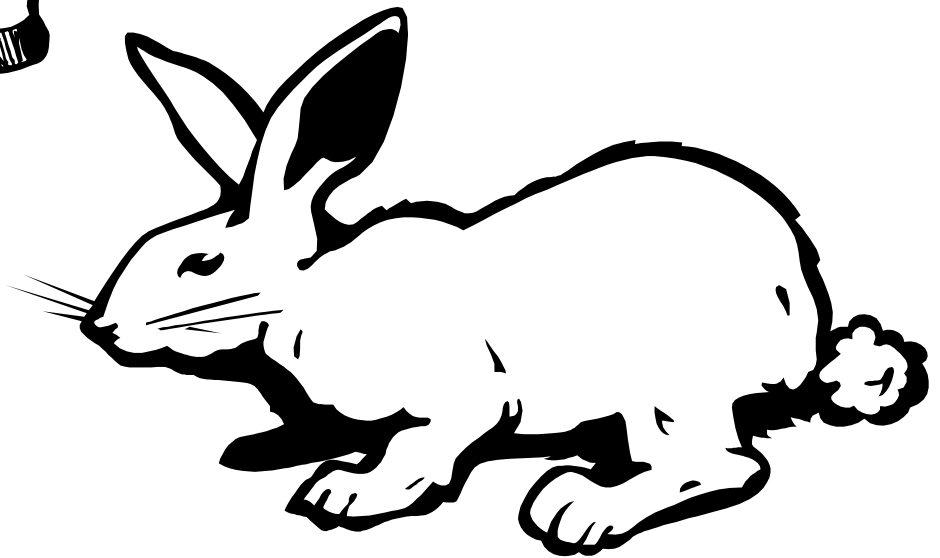
1. _____



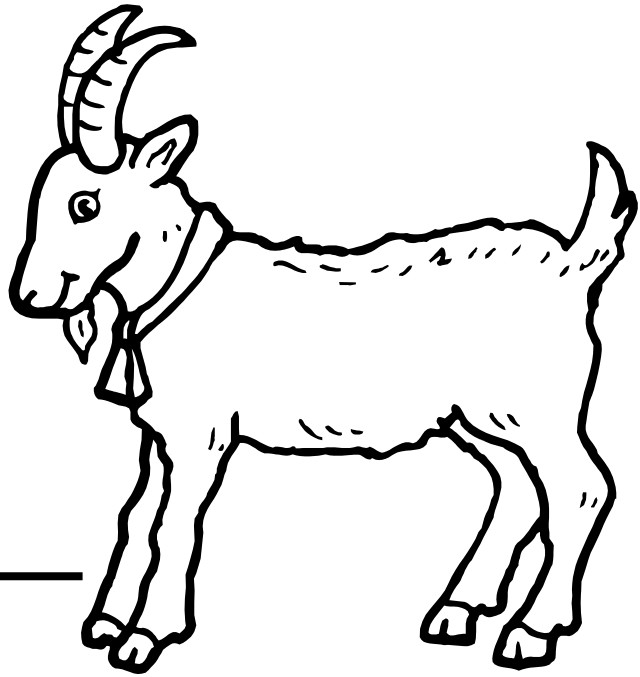
2. _____



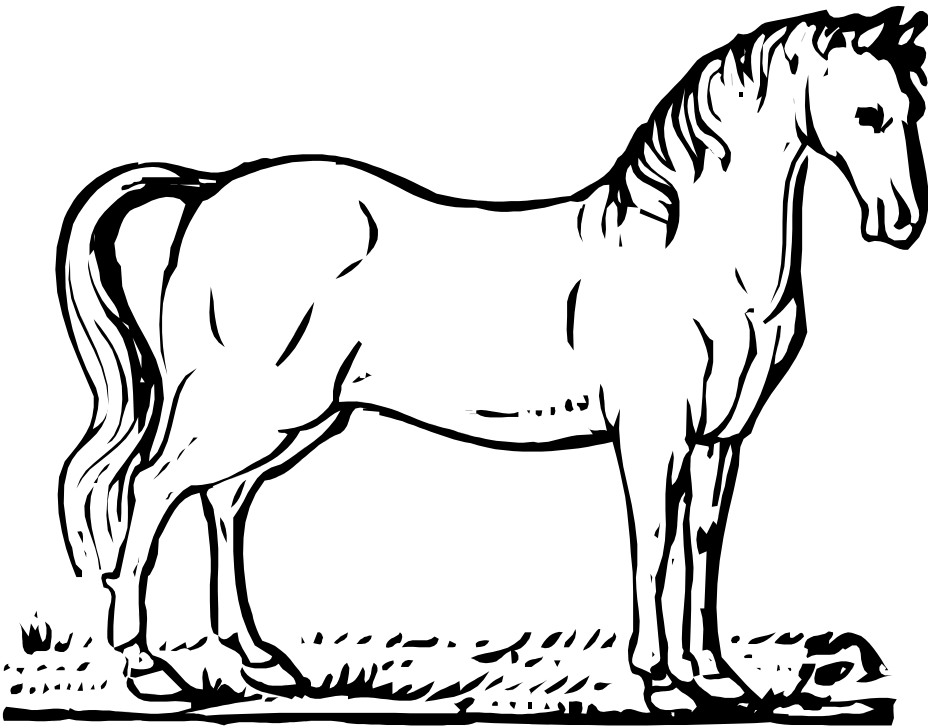
3. _____



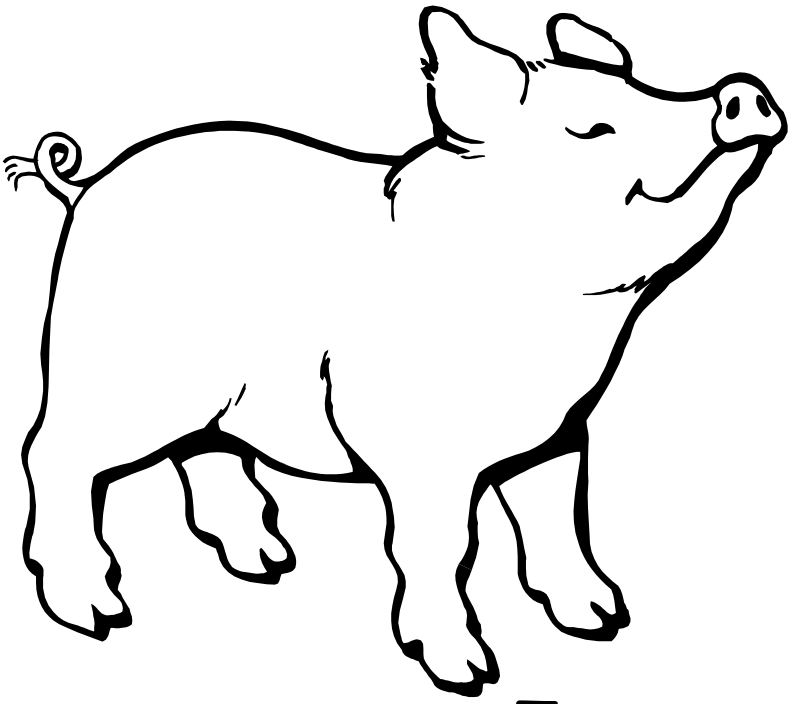
4. _____



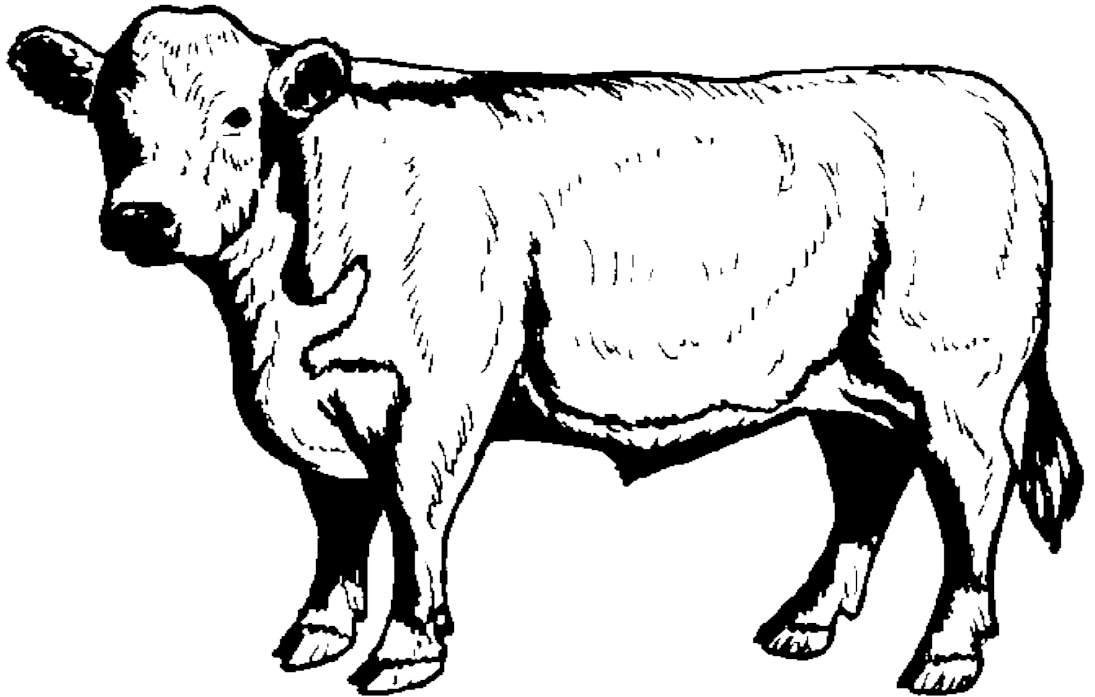
5. _____



6. _____

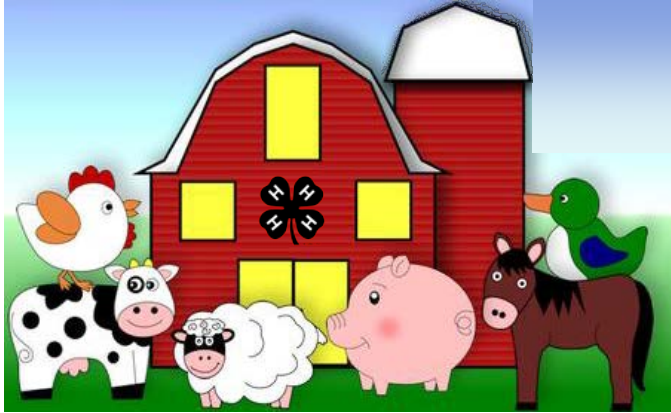


7. _____



8. _____

Down on the Farm



Farms are very important. Farms grow crops, like corn and wheat, that we eat and make bread from. They also raise farm animals. Farm animals are called *livestock*. Many people eat the meat from these animals.

Farms come in many sizes. Some are very small and are

called *hobby farms*. Hobby farms do not have many animals. People who own hobby farms usually work somewhere else. They raise animals for fun! What hobbies do you have?

Activity 2 - Make Your Own Farm

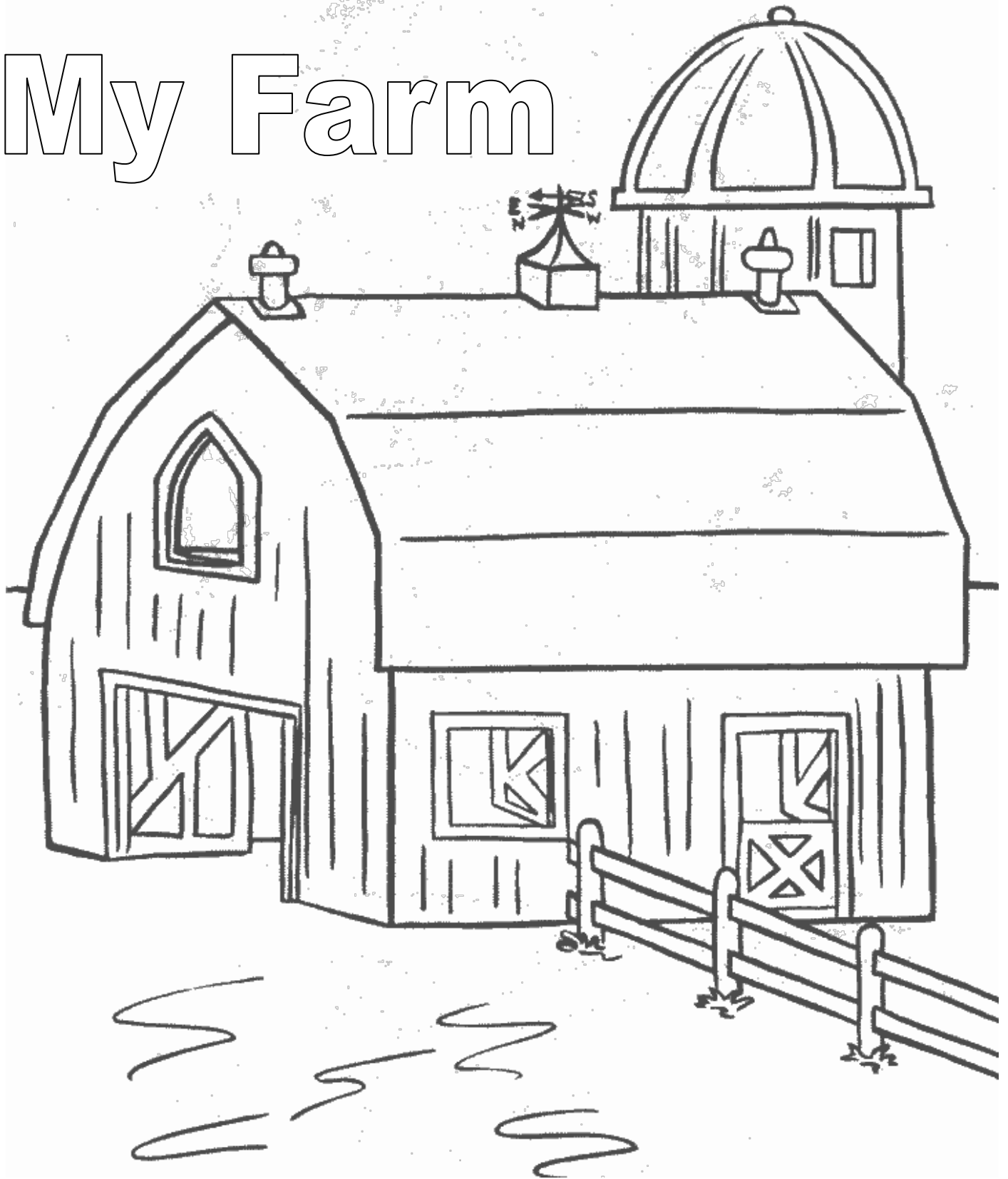
You will need:

- Pencil
- Crayons, markers, or colored pencils
- The farm picture on page 11

Here is what to do:

1. Think about how your farm would look. What kinds of animals would you raise? Look at the animals in Activity 1 if you need help.
2. Draw your animals on the farm picture. Where would your animals like to spend the day?
3. Add more things to your farm. You can add grass, tractors, and people. This is your farm - have fun!

My Farm



BIG & small



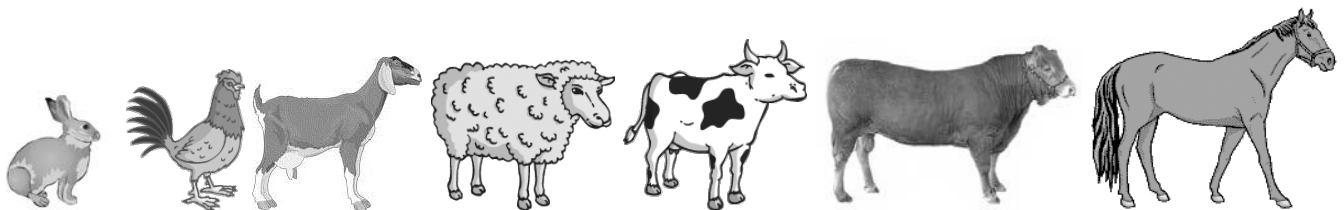
Farm animals come in all sizes. The smallest is a rabbit and the largest is a cow. Each kind of animal also comes in different sizes. A grown cow is bigger than a calf. Just like you, farm animals get bigger when they grow up.

For people, we call grown-ups *adults*. A very small child is a *baby*. You are called a *child*, which is bigger than a baby. *Teenagers* are even bigger. There are also boys and girls.



Farm animals also have different names for sizes of animals and for boys and girls. Here is a chart to help you.

Animal Name	Big Male	Big Female	Young Animal
Beef & Dairy	Bull or Steer	Cow or Heifer	Calf
Chickens	Rooster	Hen	Chick
Rabbit	Buck	Doe	Kit
Goat	Ram or Wether	Doe	Kid
Sheep	Ram or Wether	Ewe	Lamb
Swine (pigs)	Boar or Barrow	Gilt or Sow	Piglet
Horse	Stallion or Gelding	Mare	Foal (female) Colt (male)



Activity 3 - Matching

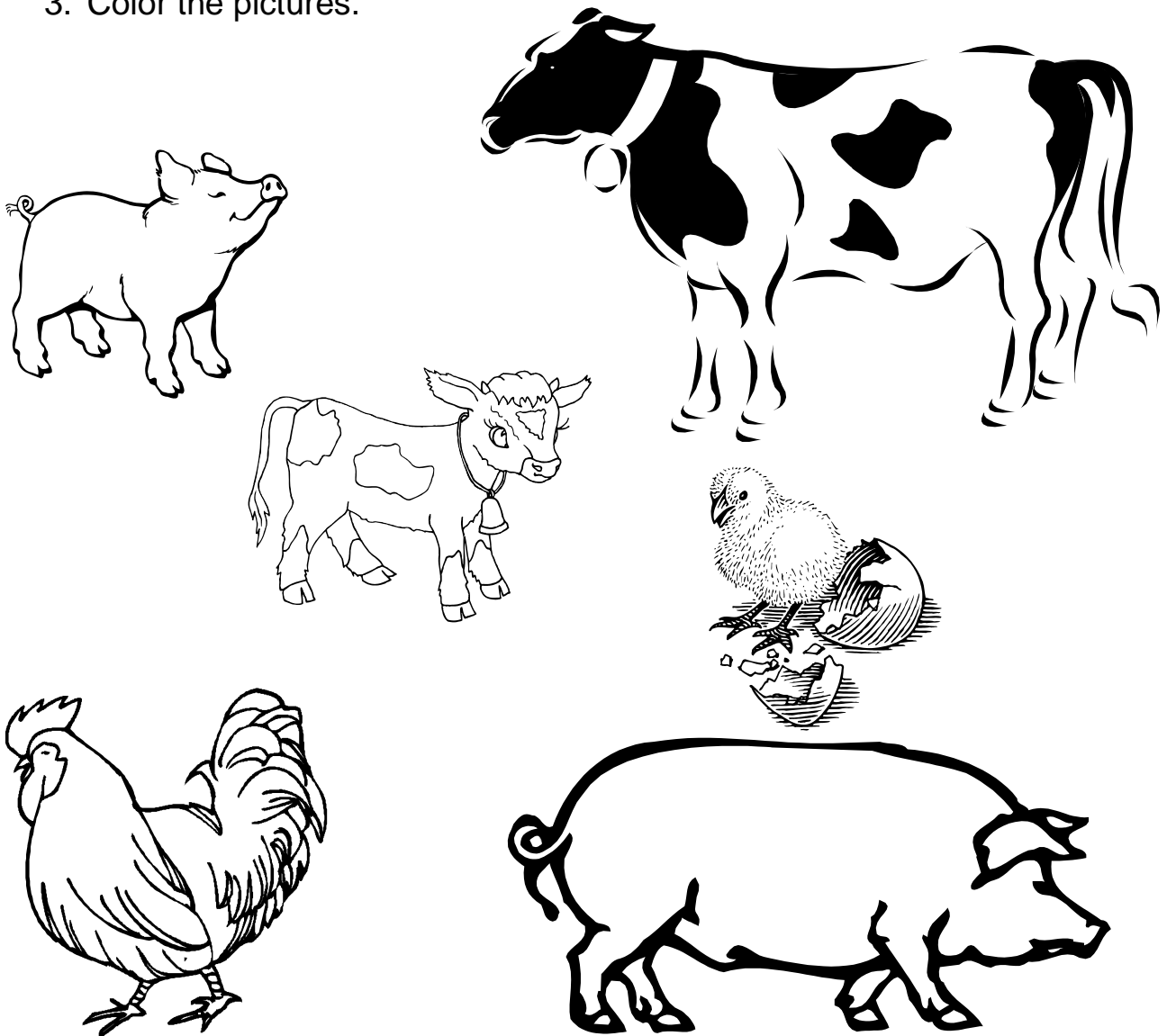
You will need:

- Pencil
- Crayons, markers, or colored pencils



Here is what to do:

1. Look at the pictures of farm animals.
2. Draw a line to match the adult animal to the baby animal.
3. Color the pictures.



Activity 4 - A Model

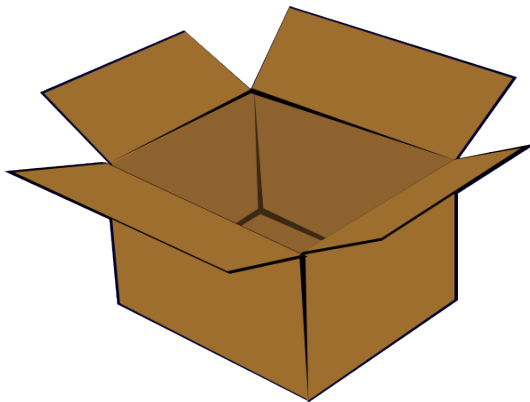
You will need:

- Modeling clay
- Paper, plants, rocks, sticks - things to make your farm animal's home
- Shoebox



Here is what to do:

1. Use modeling clay to make a model of a farm animal. You can pick your favorite animal.
2. Check the Internet or an encyclopedia for information. Have an adult help you.
3. Using things from around the house, make a farm model where your animal might live. Use a cardboard box or shoebox for your farm.
4. Add your animal to the farm model.
5. Having fun? Make more animals from your clay. Add them to the farm model too!



Farm Food

When you are hungry, you go to the kitchen to eat. Animals also look for food when they are hungry. Some animals get their food from the ground if they live outside. Some get their food from a farmer who feeds them in a barn.



Farm animals eat a lot of food. Chickens and pigs like corn, cows like hay, and horses like oats and hay. Most feed is grown by farmers. Some people buy their feed and grain at local *feed stores*. Grain is a kind of feed (corn is a grain). Don't forget - just like you, animals get thirsty, too! They need to drink plenty of water to stay healthy.

Activity 5 - Let's Eat!

You will need:

- Pencil
- Crayons, markers, or colored pencils

Here is what to do:

1. Look at the feed pictures on page 16.
2. Draw a line to match the picture to the word.
3. Color the pictures.
4. Do you eat any of these grains?



Oats



Hay



Corn



Soybeans



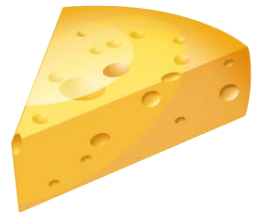
More Than Meat



Farm animals are very important to us. Not only do they help feed us, but they also give us a lot of other things. Do you have a belt? Sometimes belts are made of leather. Leather comes from cows or pigs. Do you have a warm sweater? Many sweaters are made from

wool. Wool comes from sheep or goats.

Everywhere we look, there are things that farm animals give us. What can you find around your house?



Activity 5 - Wool & More!

You will need:

- Pencil
- Chart on page 18

Here is what to do:

1. Look around your house for things made from farm animals. Start in the kitchen (in the refrigerator) to get going. Then check out all the different rooms.
2. Write down the things you find under the farm animal you think it comes from.
3. If you need help, ask an adult or an older 4-H member for ideas.
4. We have helped you with two.



What comes from farm animals?

	Beef	Dairy	Goats	Rabbits	Poultry	Sheep	Swine
1			cheese		eggs		
2							
3							
4							
5							
6							
7							
8							
9							
10							



What to Exhibit



Here is a list of projects that can be shown at the 4-H Fair. Pick *one* of the projects you would like to exhibit at the fair this year. You do not need to make the projects in any special order. If you have any questions about your projects, please call your leader or the County Extension Office.

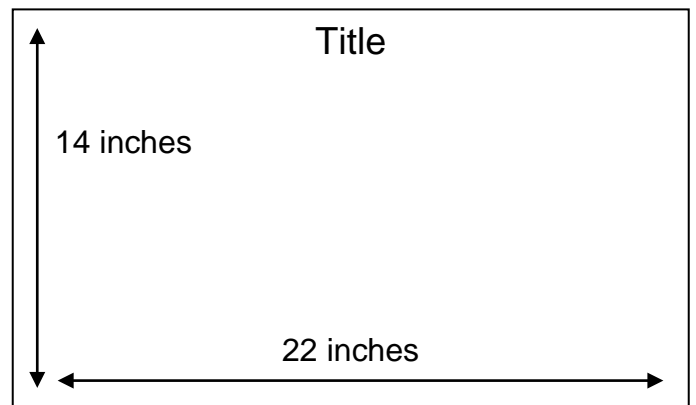
- Make a poster showing the different things that we get from farm animals. (Examples: hamburgers, wool, eggs, etc.)
- Make a poster showing the different kinds of farm animals. You can use the pictures from Activity 1 or use other pictures that you find.
- Write a story about your favorite farm animal.
- Make a model of your favorite farm animal. If you want, add it to the farm scene you made in the shoebox (see Activity 4).
- Make a poster of your favorite farm animal and identify 5 parts of the animal.
- Talk to a farmer. Ask him or her questions about working on a farm. What animals does he/she raise, and what do they feed their animals? Write a story about the farmer.
- Write or rewrite your favorite fairy tale using farm animals. (For example: Cinderella on the Farm)

Good Luck and Have Fun!

Mini 4-H Poster Requirements

Poster requirements for ALL Mini 4-H projects that require posters:

1. Poster board (14"x22") should be displayed horizontally
2. Poster should have stiff backing and covered with clear plastic
3. A title should be at the top of the poster
4. Include your name, grade and club on a card in the lower right hand corner.



Sample poster