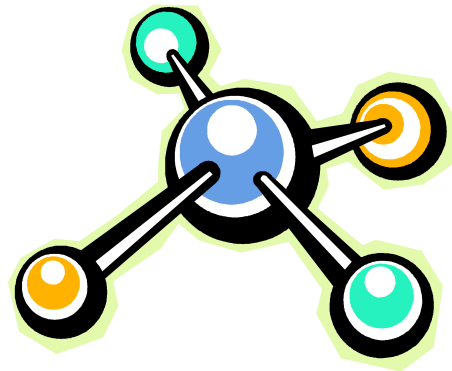
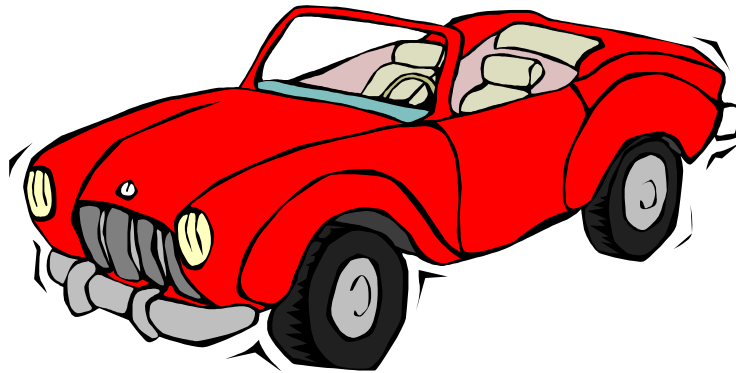


# LA PORTE COUNTY

## 4-H MODELS



## LAPORTE COUNTY 4-H MODEL PROJECT

### I. PURPOSE

This project is designed to provide members with an opportunity to be creative and to familiarize them with the techniques of assembly, construction and painting.

### II. REQUIREMENTS

The Models 4-H Project is offered to any LaPorte County boy or girl in grades 3-12 and meets the requirements as set by the local club. .

There will be a champion chosen from each division and a Grand and Reserve Grand Champion General Model will be chosen overall. The divisions are as follows:

Beginner (grades 3-5)	not to exceed \$35
Intermediate (grades 6-8)	not to exceed \$42
Advance (grades 9-12)	not to exceed \$52

1. Model car exhibit should be one 1/24 or 1/25 scale model car. Beginner models cars should be box stock version. This category also includes trucks cycles, and tractors. Advanced models can make any model of any material, wood, metal, etc. and any scale. May be your own design.
2. The General Model category includes anything which does not have an engine (engine being gas or electric powered) – example: people, monsters, displays, horses, etc. (Note: Doll houses and furniture will be judged as General Crafts. Motorcycles, tractors, tanks, etc. will be judged as model cars.)

### III. SAFETY GUIDELINES

- A. Do not use modeling glue in an enclosed or tight place, vapors from glue can be harmful. Stay in well ventilated or open areas.
- B. Precision tools used in modeling are razor sharp, consequently, they can be extremely dangerous when used or handled improperly.
- C. Use aerosol spray paint in an open place. The spray mist is flammable and spreads or travels easily. One solution is to spray paint your models in a three-sided cardboard box to collect and retain the spray drift.
- D. Do not work around open flames with aerosol paint supplies and/or the plastic component parts.

### IV. SOME POSSIBLE REFERENCES WHICH MAY HELP YOU ARE:

- A. Auto World Model Cars Magazine
- B. Model Car Science Magazine
- C. Model Builders
- D. Model Car and Truck

### V. SOME POSSIBLE SOURCES OF MODEL KITS

K-mart	Wal-Mart	Maple City Sports	Meijer
La Porte	La Porte and Michigan City	910 Lincolnway, LaPorte	Michigan City

Local Department stores, toy stores or hobby shops are also good sources.

## VI. IMPORTANT TIPS TO REMEMBER WHEN BUILDING MODELS

- A. Read all instructions and plans carefully prior to assembly to familiarize yourself with terms, parts, etc.
- B. Take your time, build up experience, and use your imagination to build models that look as real as it's full-sized counterpart.
- C. Assemble all tools and materials where you will be working. Building will be easier when things are organized.
- D. Keep the work-area clean and provide plenty of room and adequate lighting and ventilation for good working conditions.
- E. Parts should be cut – not broken – from the modeling rack as they are needed. Cut or shave away excess plastic on parts – use file to clean away excess plastic.
- F. Check fit of all parts before gluing.
- G. Use a toothpick to apply cement to small areas and pieces. Remove excess cement immediately before solvent can penetrate and damage the plastic.\
- H. Glue will not adhere to chrome-plated or painted plastic parts. Scrape away plating or paint to provide place for glue.
- I. Use white glue to attach windows and transparent or small parts.
- J. Use clothes pins or tape to hold pieces together while glue dries.
- K. Use putty to smooth and fill seams, cracks and holes. Use jeweler's fill or lightly wet sand filled areas with #500 sandpaper to remove excess filler and smooth the finish.
- L. Wash all parts to be painted in order to remove molding lubricant and dust. Rinse, dry, and apply a coat of grey primer.
- M. Check the box lid and/or photos of the real item for painting and detailing of the model.
  - i. Masking of areas for separation of colors is best done with "magic" tape or paper patters tightly taped down.
  - ii. "Feathered" edges on camouflage designs can be done with holes irregularly punched in a piece of paper held a fraction of an inch above model surface and sprayed. "Blotch" patterns can be duplicated by dabbing with a fine-pore sponge.
  - iii. Canopy lines are best painted through masking. Cover entire canopy, cut tape from framework lines, spray, let dry, remove tape.
  - iv. Trim clear film decals and position on model by holding with knife tip and pulling paper from beneath it. Use damp, lint-free rag to dab out excess water and air bubbles. "Micro set", "Dull Cote", or high gloss clear paint can be applied to decals to preserve and provide a tight fit to decals.

VI. TOOLS AND EQUIPMENT WHICH MAY AID IN CONSTRUCTION OF MODELS

- A. Liquid and tube cement
- B. Toothpicks
- C. Tweezers
- D. Scissors
- E. Single edge razor blade, sharp pocket knife, kitchen paring knife, or..
- F. "X-Auto" knife #2 with Surgically sharp interchangeable blades and key-hole
- G. Paint in bottles and/or spray cans
- H. #001, #1, #3 sable brushes
- I. Model Putty
- J. "Magic Tape"
- K. Lint-free rag
- L. Small screw driver
- M. Clothes pins, rubber bands, tape
- N. Jewelers Files
- O. "Micro-set" for decals
- P. Additional building parts and components

NOTE: SNAP TOGETHER KITS AND PREPAINTED BODIES ARE NOT ALLOWED IN ANY DIVISION.

"It is the policy of the Purdue University Cooperative Extension Service that all persons shall have equal opportunity and access to the programs and facilities without regard to race, color, sex, religion, national origin, age, marital status, parental status, sexual orientation, or disability. Purdue University is an Affirmative Action institution. This material may be available in alternative formats."

4-H MODEL RECORD SHEET  
LaPorte County

Check project selected  
 Airplane  
 Car  
 General  
 Watercraft

NAME \_\_\_\_\_

4-H CLUB \_\_\_\_\_

LEADER'S SIGNATURE \_\_\_\_\_

YEAR IN SCHOOL \_\_\_\_\_ YEAR IN 4-H \_\_\_\_\_ MODEL DIV \_\_\_\_\_

INFORMATION ABOUT YOUR PROJECT

1. Type of Model \_\_\_\_\_  
(i.e. year, model, type ...)

2. Estimated number of hours worked completing the model \_\_\_\_\_

3. Money spent on extra supplies \_\_\_\_\_

List extra supplies:

\_\_\_\_\_  
\_\_\_\_\_

4. List three things you have learned this year in Model Project

A. \_\_\_\_\_

B. \_\_\_\_\_

C. \_\_\_\_\_

5. The most common mistakes I made in assembling my 4-H Model were:

A. \_\_\_\_\_

B. \_\_\_\_\_

C. \_\_\_\_\_

6. List changes you would like to make in your 4-H Model Project for next year.

\_\_\_\_\_  
\_\_\_\_\_  
\_\_\_\_\_