

4-H Swine

Pulaski County
Developed by Wells County
Record Sheet 1-6
Grade 8

Name: _____ 4-H Club _____

1. List two advantages of participating in the 4-H swine project. _____

2. Why is adequate body capacity important? _____

3. The proportion of body parts is called _____.
4. Why should pork producers avoid using stress positive and stress carrier hogs? _____

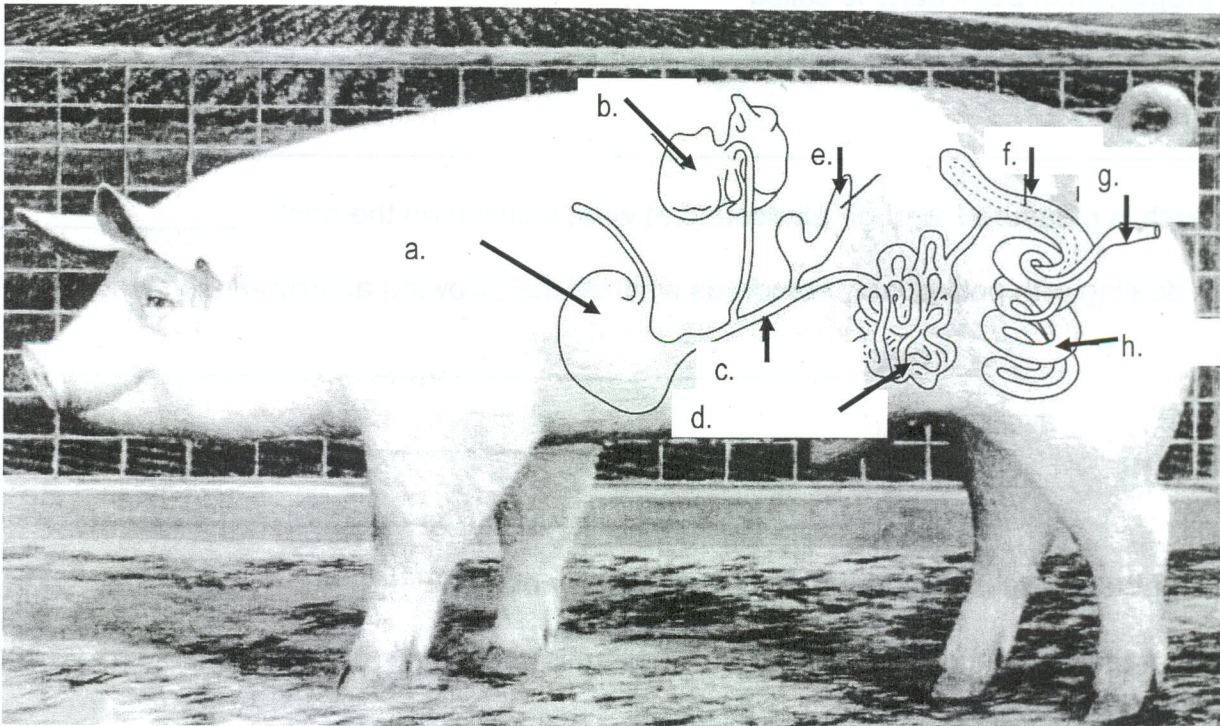
5. Fat depth is measured through ultrasound at what location on the hog? _____
6. When dealing with pork quality standards what do the following abbreviations stand for?
 1. PSE: _____
 2. RFN: _____
 3. DFD: _____
7. Which of the above is considered the "ideal" quality of pork? _____
8. List two negative things that can happen when soils containing manure nutrients move into water. _____

9. Name five possible careers in the swine industry. _____

10. Match the industrial by-product with the pig part that it is made from, you may use each answer more than once:

- | | | |
|--------------|------------------|----------------------------|
| Buttons | Matches | a. Blood |
| Crayons | Pet Food | b. Bones & Skin |
| Glass | Plastics | c. Bone Meal |
| Glue | Plywood Adhesive | d. Dried Bones |
| Fabric Dye | Rubber | e. Fatty Acids & Glycerine |
| Insecticides | Shoes | f. Meat Scraps |

11. Identify the parts of the pigs' digestive tract labeled on the picture below.



- a. _____
 b. _____
 c. _____
 d. _____

- e. _____
 f. _____
 g. _____
 h. _____