

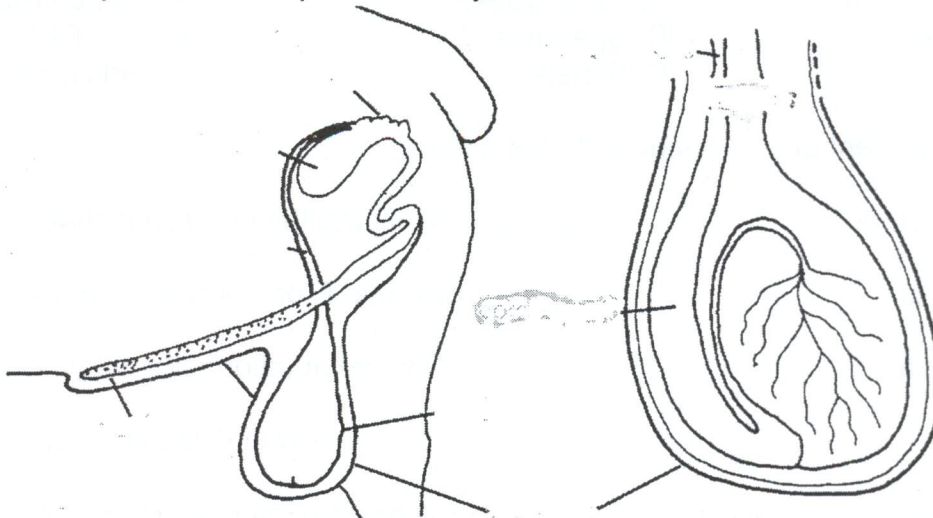
# 4-H Project

2008 Pulaski County  
Developed by Steuben County  
Record Sheet 8-1  
Grade 8

Name: \_\_\_\_\_ 4-H Club \_\_\_\_\_

1. Find the genotype and phenotype of the following: Ram is an RR and the Ewe is an Rr.


2. Identify the male parts of the reproductive system.



3. Creep feeds need to have \_\_\_\_ to \_\_\_\_ percent protein, while lambs that reach 50-60 pounds require \_\_\_\_ to \_\_\_\_ protein levels.

4. All sheep should have plenty of clean fresh \_\_\_\_\_ in front of them at all times.

5. Make a list of items that you will need to bring with you to the fair for your sheep project:

---

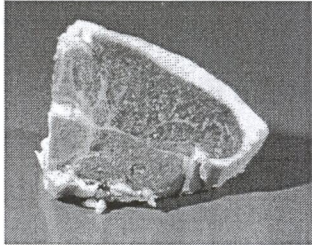


---

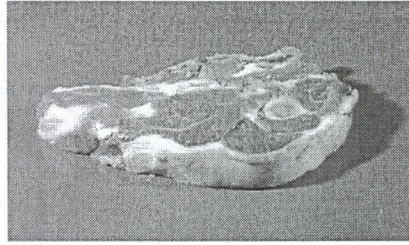


---

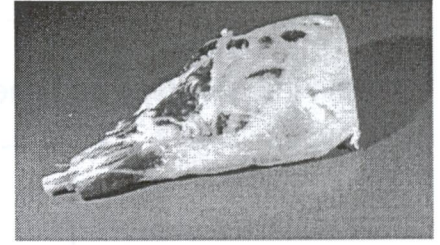
6. Identify the following cuts of lamb:



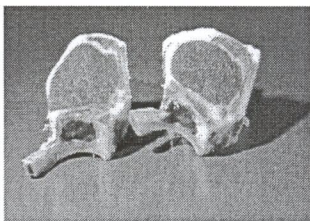
- A. Arm Chop
- B. Loin Chop
- C. Sirloin Steak



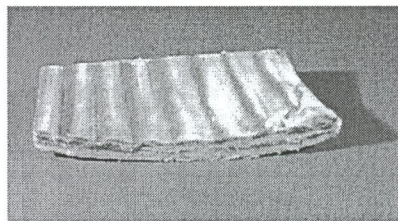
- A. Arm Chop
- B. Loin Chop
- C. Sirloin Steak



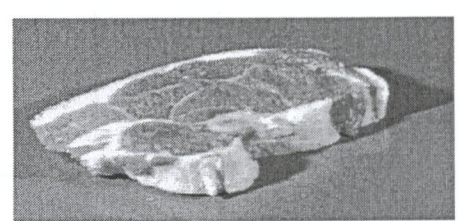
- A. Shoulder Roast
- B. Loin Roast
- C. Whole Leg



- A. French Rib Chop
- B. Sirloin Steak
- C. Arm Chop



- A. Rack Roast
- B. Spareribs
- C. Riblets



- A. French Rib Chop
- B. Loin Chop
- C. Sirloin Steak

7. Match the treatment or prevention with the disease:

- |                     |       |                                        |
|---------------------|-------|----------------------------------------|
| A. Enterotoxemia    | _____ | Eliminate the conditions that cause it |
| B. Coccidiosis      | _____ | Vitamin E or selenium injections       |
| C. Pneumonia        | _____ | Optimal nutrition, clean dry fleece    |
| D. Navel ill        | _____ | Vaccinate with Clostridium type D      |
| E. Sore Mouth       | _____ | Good balance of calcium to phosphorus  |
| F. Stiff Lamb       | _____ | Drugs and feed additives help control  |
| G. Urinary Calculi  | _____ | Vaccinate the flock                    |
| H. Club lamb fungus | _____ | apply iodine and clean lambing areas   |

8. Meat from sheep older than 12 months is referred to as \_\_\_\_\_.

Answers to all the questions can be found in the Sheep Resource Handbook 4-H 194R .