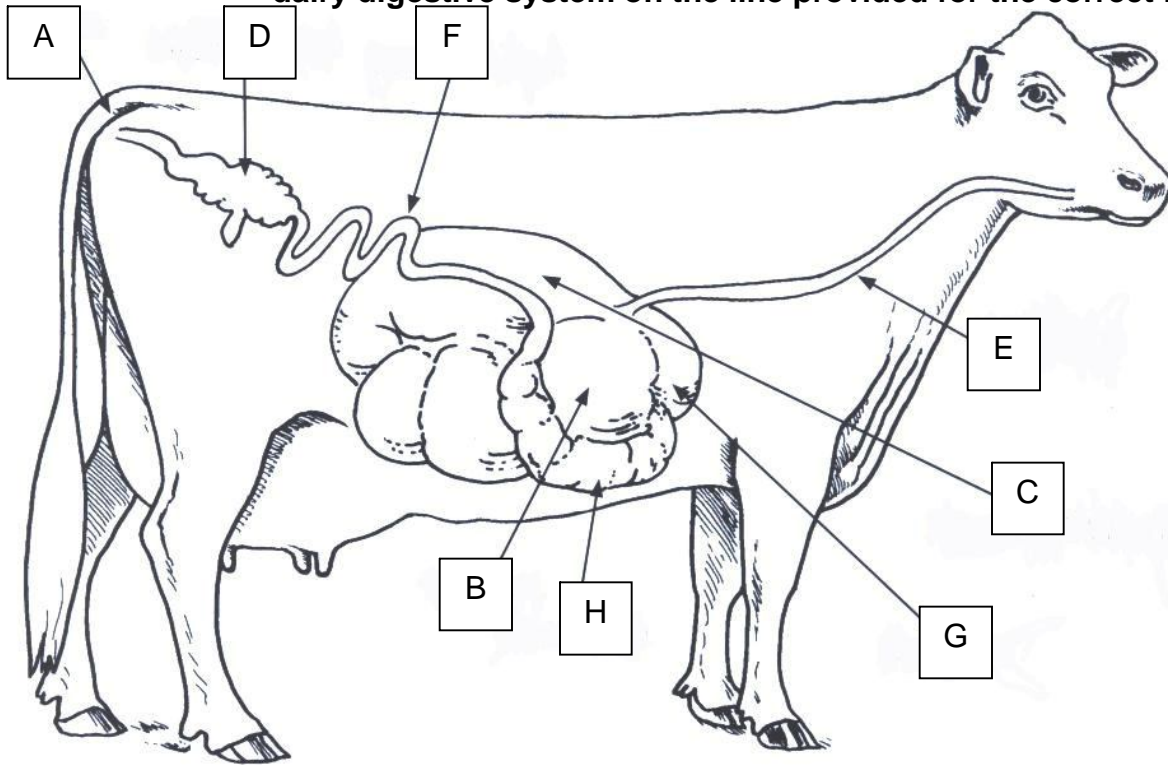




# 4-H Dairy

Name: \_\_\_\_\_ 4-H Club \_\_\_\_\_

**The Ruminant Digestive System Identification: Please write the correct name of the dairy digestive system on the line provided for the correct letter.**



A. \_\_\_\_\_  
B. \_\_\_\_\_  
C. \_\_\_\_\_  
D. \_\_\_\_\_

E. \_\_\_\_\_  
F. \_\_\_\_\_  
G. \_\_\_\_\_  
H. \_\_\_\_\_

**Diseases, Health Management, Nutrition - Fill in the blanks: Please write the correct answer on the line provided to correctly complete the statement.**

1. Identify the three types of bloat and what causes them.

\_\_\_\_\_  
\_\_\_\_\_  
\_\_\_\_\_

2. A cows' rumen can hold \_\_\_\_\_ gallons of material.

3. What microorganisms live in the rumen? \_\_\_\_\_

4. What is colostrum and why is it so important to calves at birth? \_\_\_\_\_  
\_\_\_\_\_
5. What is the purpose of minerals to a dairy cow? \_\_\_\_\_  
\_\_\_\_\_
6. What is the purpose of feed additives in a dairy cow diet? \_\_\_\_\_  
\_\_\_\_\_
7. What are the three main feeding systems?  
\_\_\_\_\_

**Causes of Disease Cross Word Puzzle: Write the correct answer in the spaces provided for each phrase.**

**Across**

2. lack of colostrum, wet dirty pens, lack of ventilation, overcrowding of calves
5. pressure on the lower abdomen because of the calf
7. low magnesium levels in pasture
10. prohibits the release of gas
12. becomes filled, moves and twists, usually occurs around calving time

**Down**

1. seasonal problem, usually during the winter
3. lack of colostrum, dirty wet maternity pens, dirty wet calf pens
4. transmitted through pasture feeding
6. fungal infection
8. mobilizing body fat faster than the liver can process
9. sharp metal object punctures the wall of the reticulum
11. thought to be caused by spirochete
13. lack of colostrum, wet dirty pens, lack of ventilation, rapid change of feed
14. one celled parasitic organism

