



4-H Sheep Project

Jasper County
C
Grade 3

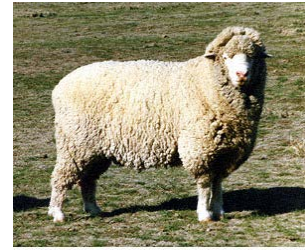
Name: _____ 4-H Club _____



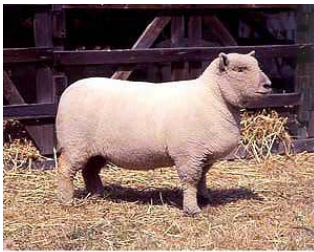
1.



2.



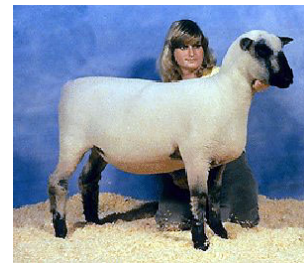
3.



4.



5.



6.

_____ Southdown

_____ Targhee

_____ Lincoln

_____ Polypay

_____ Shropshire

_____ Rambouillet

7. A castrated male sheep is called a _____.

8. The removing of the edges from the whole fleece is called _____.

9. Match the following:

Ram Breed

A. Superior mothering ability

Ewe Breed

B. Either ram or ewe

Dual Purpose Breed

C. Meat-type

Answers to all the questions can be found in the Sheep Resource Handbook 4-H 194R

10. Sheep Equipment

S Y X V J P P Y R M D S X S H	EAR TAGS
E Z X C Y R Q S W E S E L C E	EMASCULATOR
L S T H E R M O M E T E R S A	HALTER
A R B O S M S U A Y W L R D T	HEAT LAMP
C E Y R O R A R F O M E A T L	HOOF TRIMMERS
S M V C C G T S T K P D W H A	SCALES
R M C L B A U X C P A R F D M	SYRINGE
X I J M G Q U U I U D Z X D P	THERMOMETER
H R H S B V E L A X L N I B S	TOWELS
N T M I X D C H F L L A Z M W	WOOL CLIPPERS
M F D P D L H C V H O I T D O	
K O D Y O S I O J P M S K O D	
E O D O W B T L Z Q L M U X R	
U H W G E G N I R Y S I T Z R	
L W U Z L C M Y O A E W C T F	

11. Match the following retail cuts with its wholesale part:

- | | |
|-----------------------|-------------|
| 1. _____ Sirloin Chop | A. Shoulder |
| 2. _____ Arm Chop | B. Rack |
| 3. _____ Rib Chops | C. Loin |
| 4. _____ Loin Roast | D. Leg |
| 5. _____ Lamb Paties | E. Breast |

12. If you give a lamb a shot in the muscle it is called a _____.

13. Find the following items on a feed tag:

LAMB STARTER
MEDICATED
 STARTER FOR GROWING LAMBS

FOR THE PREVENTION OF COCCIDIOSIS
 CAUSED BY Eimeria ovina, Eimeria crandallii, Eimeria
 ovinoidalis, Eimeria ninakohlyakimovae, Eimeria parva
 AND Eimeria intricata IN SHEEP MAINTAINED IN
 CONFINEMENT.

ACTIVE DRUG INGREDIENT
 LASALOCID (AS LASALOCID SODIUM)
 90 G/TON

GUARANTEED ANALYSIS

CRUDE PROTEIN	MIN 20.00%
CRUDE FAT	MIN 2.50%
CRUDE FIBER	MAX 10.00%
CALCIUM	MIN 0.75%
CALCIUM	MAX 1.25%
PHOSPHORUS	MIN 0.55%
SALT	MIN 0.40%
SALT	MAX 0.90%
SELENIUM	MIN 0.30 PPM
VITAMIN A	MIN 2,000.00 IU/LB

INGREDIENT USAGE
 Processed Grain By-Products, Grain Products, Plant
 Protein Products, Forage Products, Roughage Products,
 Molasses Products, Ground Limestone, Salt, Lignin
 Sulfonate, Potassium Sulfate, Magnesium Sulfate,
 Magnesium Oxide, Sodium Selenite, Calcium Propionate,
 Vitamin E Supplement, Vitamin A Acetate, Vitamin D-
 3 Supplement, Zinc Sulfate, Zinc Oxide, Sodium Molyb-
 date, Manganese Oxide, Calcium Iodate, Cobalt Carbon-
 ate, Ferrous Sulfate.

FEEDING DIRECTIONS
 Lamb Starter contains 45 mgs. of lasalocid per pound.
 Feed continuously as the sole ration to growing lambs from
 1 to 6 weeks of age at the rate of 0.33-1.55 pounds per
 head per day to provide not less than 15 mgs. And not
 more than 70 mgs. Of lasalocid per head per day. Provide
 clean, fresh water at all times.

CAUTION
 The safety of lasalocid in unapproved species has not been
 established; do not allow horses or other equines access to
 lasalocid as ingestion may be fatal; feeding, undiluted or
 mixing errors resulting in excessive concentrations of
 lasalocid could be fatal to sheep.

MANUFACTURED BY:
 SKILLATHON FEEDS

NET WEIGHT 50 POUNDS (22.7 KILOGRAMS)
 OR AS SHOWN ON FEEDING EQUIPMENT

Min % salt _____
Net Weight _____
Manufactured by _____
Vitamins it contains _____
Selenium _____