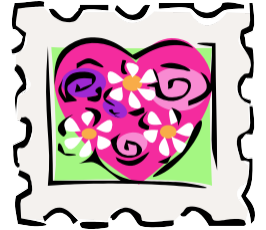
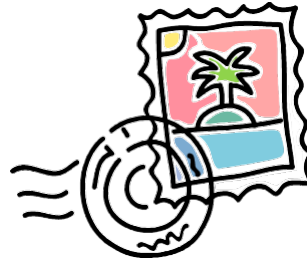


Collections

LaPorte County

Mini 4-H



Adapted from: Purdue Extension Hendricks County 4-H

It is the policy of the Purdue University Cooperative Extension Service that all persons have equal opportunity and access to its educational programs, services, activities, and facilities without regard to race, religion, color, sex, age, national origin or ancestry, marital status, parental status, sexual orientation, disability or status as a veteran. Purdue University is an Affirmative Action institution. This material may be available in alternative formats.

Mini 4-H Parent's Page

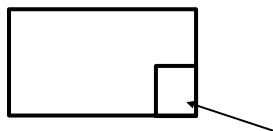
We welcome you and your child to the LaPorte County Mini 4-H program. Mini 4-H is for youth who are in kindergarten, first or second grade during the 4-H year (October 1-September 30). This program is designed to encourage positive development, give youth the opportunity to explore interests, practice small and large muscle control, and introduce you to the LaPorte County 4-H program.

As a Mini 4-H parent or guardian, please support your child through the activities in this handbook. Encourage and praise your child as they have fun learning and sharing with you. Please avoid completing activities for them. Learning by doing is the best educational tool that we can provide for youth.

Mini 4-H exhibition, held annually at the LaPorte County Fair, is an exciting time for all 4-H members, families and friends. It is a week that allows youth to showcase their talents, interests and enthusiasm for learning.

Where Do I Begin?

1. Mini 4-H is open to any youth who is enrolled in either kindergarten, first or second grade on January 1st of the current year.
2. Enroll your Mini 4-H youth on v24honline.com and pay the annual \$5 program fee to be an active Mini 4-H member. Once registered, you will receive a bimonthly email bulletin keeping you informed of Mini 4-H and 4-H opportunities. Any questions can be answered by LaPorte County Purdue Extension at 219-324-9407.
3. Mini 4-H participants complete activities and projects found in this guide. Activities and projects are completed at home.
4. One (1) project from this handbook can be exhibited at the Mini 4-H exhibition. Please complete the Mini 4-H Exhibit tag and attach it to your project, as well as a record sheet (both are included in this manual). Watch your email for dates of exhibit check-in.
5. Some projects require a poster to exhibit. Following are **POSTER EXHIBIT guidelines**:
 - A. Stiff backing 14" high by 22" wide. (This can be cardboard or foam core board.)
 - B. Position poster board **HORIZONTALLY**.



Mini 4-H Exhibit Tag

What Do the H's in 4-H Mean?

Head, Heart, Hands, and Health

4-H Symbol: A four-leaf clover with an "H" on each leaf

4-H Colors: Green and White

4-H Motto: "To make the best better!"



4-H PLEDGE

I pledge my **HEAD** to clearer thinking,

I promise to use my head to make good choices.

my **HEART** to greater loyalty,

I promise to use my heart to be a good friend.

My **HANDS** to larger service,

I promise to use my hands to do helpful things for others.

And my **HEALTH** to better living,

I promise to take care of my body and to show others to live in a healthy way.

For my club, my community,

I promise to help my group, my community,

My country, and my world

Mini 4-H Exhibition

Everyone loves to collect things. Collecting is as easy as finding a group of your favorite erasers or gathering a group of rocks. Learn more about collecting and why people collect things.

The best place to begin is to explore. Try collecting things that are easy to find around the house or yard. There are so many things that you can collect. So, what are you going to collect?

Kindergarten and 1st Grade Project Options:

Display: What I Collect

Poster: What You Collect

2nd Grade Project Options:

Display: What I Collect

Notebook: What Museums Collect

Check your email and biweekly 4-H bulletin for the date and time of Mini 4-H exhibits are to be checked in. You may exhibit 1 project from this handbook. Remember to include completed Record Sheet and Mini 4-H Exhibit Tag with your exhibit. If you have any questions about your projects, please call the Extension Office at 219-324-9407.

MINI 4-H EXHIBIT		
Project: (Circle One)		
Arts & Crafts	Bicycle Safety	Bugs
Collections	Cookie Decorating	
Farm Animals	Foods	Gardening
Little Peeps	Models	Nature/Plants/Trees
Pets	Recycling	Sewing
Sun, Stars & Space	Wearable Art	
NAME: _____ GRADE: _____		

Kindergarten & First Grade

What I Collect

Materials Needed:

- Items you collect (6—8 items or pairs)
- Scrapbook, shoe box, egg carton, poster or box lid (What you will use to display your collection). If using a poster (see pages 3)
- Rubber Cement, Tape, push pins (if needed), etc. to mount your collections
- ***What Do I Collect?*** (page 11)

Directions:

1. Collect 6 to 8 items or pairs of items.
2. Pick how you are going to display your collection. You can display your collection in many ways. Be creative! You can make a display using a poster or a scrapbook, use a shoe box, lid or egg carton as examples. Items could be in small plastic bags and attached to a board.
3. Make sure you have permission to take the items for your collection. Fill out ***What Do I Collect?*** in manual
4. Include the ***What Do I Collect?*** form with the items you are collecting and displaying. Put away your materials and clean up your work area.
5. Display your collection.
6. If this is your exhibit for the Mini 4-H Exhibition at the LaPorte County Fair.

What You Collect

Materials Needed:

- Friends or Family Members
- ***What Do You Collect?*** (page 13)
- _____'s ***Collection*** paper, in this manual
- Pencils, Markers or Crayons
- Poster Board (see page 3)
- Rubber Cement or Double-Sided Tape

Directions:

1. Talk to family and friends. Ask them what they like to collect and why they like to collect it. Fill in ***What Do You Collect?*** in manual.
2. Pick one collection from your chart and draw a picture of the items that person collects using "**__'s Collection**".
3. Put away your materials and clean up your work area.
4. Create a poster using ***What Do You Collect?*** And "**_____ 's Collections**". You may use pictures, drawings, or samples of the collection on the poster.
5. If this is your exhibit for the county fair, attach the County Tag.

Second Grade

What I Collect

Materials Needed:

- Items you collect (8—12 items or pairs)
- Scrapbook, shoe box, egg carton, poster or box lid (What you will use to display your collection). If using a poster (see page 3).
- Glue, Tape, push pins (if needed)
- ***What Do I Collect?*** in manual

Directions:

1. Collect 8 to 12 items or pairs of items.
2. Pick how you are going to display your collection. You can display your collection in many ways. Be creative! You can make a display using a poster or a scrapbook, use a shoe box, lid or egg carton as examples. Items could be in small plastic bags and attached to a board.
3. Make sure you have permission to take the items for your collection. Fill out ***What Do I Collect?*** in this manual
4. Include the ***What Do I Collect?*** form with the items you are collecting and displaying. Put away your materials and clean up your work area.
5. Display your collection.
6. If this is your exhibit for the county fair, attach the County Tag.

What Museums Collect

Materials Needed:

- Museum
- Parent or Adult
- Poster
- Pencils, Markers or Crayons
- Poster Board (see page 3)
- Rubber Cement or Double-Sided Tape
- ***My Museum Hunt***, in this manual
- ***Wow, look what I found!***, in this manual

Directions:

1. Take the ***My Museum Hunt*** page and go to a museum and look around at the collections of things. Complete the page by observing and/or asking someone at the museum.
2. Using ***Wow, look what I found!*** sheets, label and draw a picture of:
 - a. your favorite collection
 - b. the most unusual collection
 - c. the oldest
3. Create a poster using ***My Museum Hunt*** and ***Wow, look what I found!***. You may use pictures, drawings, or samples of the collection on the poster.
4. If this is your exhibit for the county fair, attach the County Tag.

What Do I Collect?

List some of the things you collect. Fill in the chart below. List one special item from each collection.

Item	How Many Do You Have?	Did You Have to Buy These Items?	Special Item

What is your favorite collection? _____

Why do you like to collect these things? _____

Where did your favorite special item come from?

What Do You Collect?

Talk to your family and friends. Ask them what they like to collect and why they collect these items. Ask them if they have a special item in their collection. Fill in the chart below.

Person	Thing	How Many Do You Have?	Special Item

What are some things that people in your family like to collect? _____

Which of these collections is your favorite? _____

Why? _____

My Museum Hunt

What is the name of museum visited?

What was the date of the visit? _____

Where is the museum located? _____

Who visited the museum with me? _____

What is the oldest thing observed at the museum? _____

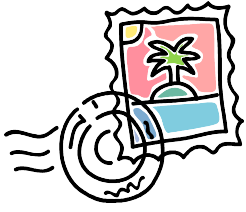
How old is it? _____

How does the museum get pieces for exhibit? _____

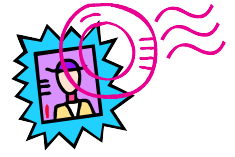
The most interesting part of the museum was: _____

Wow, look what I found!

<p>What was the most unusual collection?</p> <hr/> <p>Drawing or Photograph:</p>	<p>What was the oldest collection?</p> <hr/> <p>Drawing or Photograph:</p>
<p>What was the newest collection?</p> <hr/> <p>Drawing or Photograph:</p>	<p>What was your favorite collection?</p> <hr/> <p>Drawing or Photograph</p>



Things People Collect



S L A D E M S S S S

S P M A T S T K L N

S D O L L S I O L E

O E K W S V C O E Z

T O V N L B K B H Y

K O I A U U E D S S

V O Y G E L R L J K

C K S S W L S I O V

P I C T U R E S G L

P E N C I L S T X K

BOOKS

DOLLS

PENCILS

STAMPS

BUGS

LEAVES

PICTURES

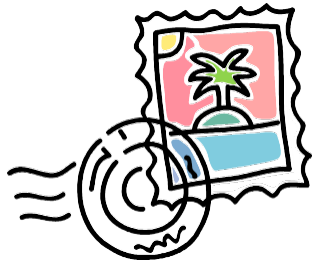
STICKERS

COINS

MEDALS

SHELLS

TOYS



Mini 4-H Collections Record Sheet

I collect _____
_____.

I began collecting when _____
_____.

My favorite part of this collection is _____

_____.

Name: _____ Date: _____